



Milwaukee Neighborhood Forum

PUBLISHED BY URBAN ANTHROPOLOGY INC. "IN THE TRADITION OF JANE JACOBS" APRIL/MAY EDITION

Milwaukee Neighborhood Forum is a bimonthly newsletter that highlights assets, history, events, and resources for and about Milwaukee neighborhoods. Residents and neighborhood organizations are encouraged to submit press releases on their events and successful programs. See back page for details.

30 internationally recognized sports stars that once lived in Milwaukee neighborhoods



Ninth of a ten-part series on Milwaukee celebrities in the Bay View neighborhood

April and May in-person activities in Milwaukee neighborhoods (most under \$10)

Total of 50 events under the categories of museums, arts, family, kids, special interests, enrichment activities, outdoor events, walks/tours, food/farmers markets, and several more

WALKING TOURS

What? SKYWAUKEE WALKING TOUR **When?** Sat.'s, 1:00 and 3:00pm. **Where?** Meets in the street level lobby of the Plankinton Building, 161 W. Wisconsin Ave. **Description** Historic Milwaukee Inc. tour that explores the architectural and cultural history of Milwaukee's landmarks while staying indoors. <http://historicmilwaukee.org/walking-tours/> **Admission** Free to \$15.

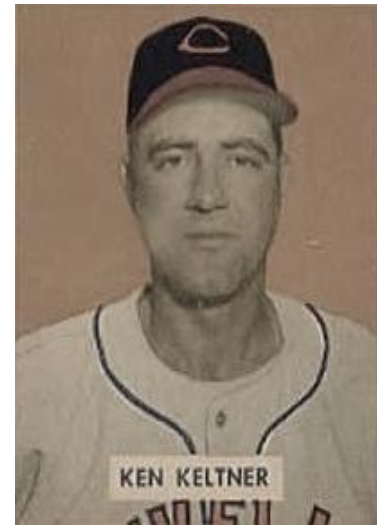


What? THE HOP STREET-CAR TOUR **When?** Apr. 1, 15, 22, 29, Fri., 1:00pm; Sat., Apr. 16, 10am. **Where?** 235 E. Michigan Ave. **Description** Historic Milwaukee Inc. tour that explores urban renewal from the edge of the Menomonee Valley to the downtown Yankee Hill neighborhood. Masks required always on street car. <http://historicmilwaukee.org/walking-tours/>

Admission \$5 to \$15.

What? SELF-GUIDED TOUR OF VA GROUNDS **When?** Daily, daylight **Where?** Just north of Zablocki VA Medical Center, 5000 W. National Ave. **Description** A walk through the historic district

Continued on Page 2



Kenneth Frederick Keltner (1916-1991) played third base and was a seven-time All-Star for the Cleveland Indians. He grew up on S. Superior in the Bay View area. He also played for the Boston Red Sox. Keltner was one of the top-rated fielding third basemen in the 1940s and known for helping to

end Joe DiMaggio's 56-game hitting streak on July 17, 1941.

Irving Henry Comp Jr. (1919-1989) was an American football player who spent his entire seven-year NFL career with the Green Bay Packers. He was born in Bay View. Comp was inducted into the Green Bay Packers Hall of Fame in 1986 and holds the record for the Packers of most interceptions in a season (10) in 1943. He had sight in only one eye.

Continued on Page 8

ACTIVITIES IN MILWAUKEE NEIGHBORHOODS

Continued from Page 1

which includes the Soldiers' Home, barracks building, old fire station, old hospital, Ward Memorial Theater, and more. <http://www.milwaukee.va.gov/visitors/campus.asp> Admission Free.

What? GUIDED TOUR OF BASILICA OF ST. JOSAPHAT
When? Reserve tour on website. *Where?* Basilica of St. Josaphat, 2333 S. 6th St. *Description* Opportunity to see and learn about one of the most beautiful churches in America. <http://thebasilica.org/visit> Admission Free.

What? UNGUIDED TOUR OF BASILICA OF ST. JOSAPHAT
When? Mon.-Fri., 9am-3pm *Where?* Visitor's Center, Basilica of St. Josaphat, 2333 S. 6th St *Description* Opportunity to see and learn about one of the most beautiful churches in America with informational exhibits on lower level. <http://thebasilica.org/> Admission Free.

What? WALK THROUGH MILWAUKEE'S LATINO HISTORY
When? Daily *Where?* United Community Center, 1028 S. 9th St. *Description* Opportunity to learn about Latino history by visiting tannery and foundry exhibits, photos, and art inside the UCC building, and historical murals on two sides of Bruce Guadalupe School next door. <http://www.unitedcc.org/index.htm> Admission Free.

What? SELF-GUIDED TOUR OF FOREST HOME CEMETERY
When? Daily 8am-4:30pm *Where?* 2405 W. Forest Home *Description* Tour the beautiful Chapel Gardens, Landmark Chapel, and the Hall of History that tells the story of Milwaukee dignitaries, including European founders of Milwaukee, several mayors, major African American activists, and brewery tycoons. Admission Free.

MUSEUMS IN THE NEIGHBORHOOD

What? ROZGA FAMILY'S OLD SOUTH SIDE SETTLEMENT MUSEUM *When* Reserve group tour at JFLanthropologist@currently.com *Where?* 707 W. Lincoln Ave. *Description* Exhibits of the history, celebrities, and populations of the area; miniature Polish flat that the kids love. Admission Free.

What? CHARLES ALLIS ART MUSEUM *When?* Wed.'s thru Sun.'s 10am-4pm, reservations helpful as hours may vary. *Where?* 1801 N. Prospect Ave. *Description* Self-guided tour of Tudor-style mansion of entrepreneur Charles Allis designed by Milwaukee architect Alexander Eschweiler in early 20th century. <http://www.charlesallis.org/> Admission \$10, \$5 seniors & students.

What? VILLA TERRACE DECORATIVE ARTS MUSEUM
When? Wed.'s thru Sun.'s 10am-4pm, reservations helpful as hours may vary. *Where?* 2220 N. Terrace Ave. *Description* Self-guided tour of mansion informed by the design of a villa in Lombardy, Italy, complete with Renaissance Garden, and antique furnishings and artifacts. <https://www.villaterrace.org/> Admission \$10, \$7 seniors, military & students.

Continued on Page 3

Happening in the Lincoln Village neighborhood



The Rozga Family's Old South Side Settlement Museum

With neighborhood history exhibits and a Depression-era miniature Polish flat (which the kids will love, see room above)

707 W. Lincoln Avenue

ACTIVITIES IN MILWAUKEE NEIGHBORHOODS

Continued from Page 2

What? MILWAUKEE COUNTY HISTORICAL SOCIETY *When?* Wed.'s thru Sat.'s, 9:30am-5pm *Where?* 910 N. Old World Third St. *Description* Permanent and rotating exhibits of Milwaukee County's history plus a research library. Current exhibit, "Milwaukee: Where the Waters Meet." <http://www.milwaukeehistory.net/> *Admission* \$7, \$5 seniors, military, students; children ≤ 12 , and members free.

What? HAGGERTY MUSEUM OF ART *When?* Daily 10am-4:30pm, Thu.'s 10am-8pm; Sun.'s, 12-5pm *Where?* Marquette campus at corner of 13th & Clybourn Sts. *Description* Permanent collections include Old Masters' prints, Ralph Steiner photos, Marc Chagall Bible series, Barbara Morgan photos, and Finnegan, Fishman, Tatalovich, and Rojzman collections. <http://www.marquette.edu/haggerty/> *Admission* Free.

What? GROHMANN MUSEUM *When?* Mon.-Fri. 9am-5pm, Sat.'s 12-6pm, Sun.'s 1-4pm *Where?* 1000 N. Broadway *Description* More than 1,000 paintings and sculptures representing the long evolution of human work. <http://www.msoe.edu/about-msoe/grohmann-museum/> *Admission* \$5, \$3 students, seniors; free <12.

What? NORTHPOINT LIGHTHOUSE MUSEUM *When?* Sat.'s & Sun.'s 1-4pm *Where?* Northpoint Lighthouse, 2650 N. Wahl Ave. *Description* A historic, maritime experience, with artifacts related to the history of the Great Lakes. <http://northpointlighthouse.org/> *Admission* \$8, \$5 seniors & kids 5-11, free kids <4.

What? GALLERY AT MILWAUKEE INSTITUTE OF ART & DESIGN *When?* Gallery showing exhibits Feb. 1 to Mar. 12, Daily 10am-5pm *Where?* 273 E. Erie St. *Description* Rotating exhibitions of renowned artists, MIAD students, and MIAD faculty. <http://www.miad.edu/> *Admission* Free.

What? MILWAUKEE PUBLIC MUSEUM *When?* Free 1st Thu.'s each month *Where?* 800 W. Wells St. *Description* Chance to visit one of the premier natural history and science facilities, world-renowned for its exhibits, collections, ongoing scientific research and educational exhibits. www.mpm.edu/ *Admission* Free (on date designated).

What? MITCHELL PARK DOMES *When?* Wed. to Fri., 9am-5pm; Sat.'s, Sun.'s 9am-4pm. *Where?* 524 S. Layton Blvd. *Description* A place to experience a desert oasis, a tropical jungle, and special floral gardens all in one visit. <http://county.milwaukee.gov/MitchellParkConserva10116.htm> *Admission* Free to \$8.

What? MILWAUKEE FIRE MUSEUM *When?* 1st Sun. of each month, 1-3pm, (except holidays). *Where?* 1516 W. Oklahoma Ave. *Description* Opportunity to see exhibits and artifacts of the Milwaukee Fire Department back to the 1800s; stories of history of the department and fires. <http://city.milwaukee.gov/MUSEUMHISTORICALSOCIETY.htm#.VkoAEMArLIU> *Admission* Free.

Continued on Page 4

Happening in the Northpoint neighborhood



Enjoy the seasons at the Northpoint Lighthouse Museum

2650 N. Wahl Avenue
Open Saturdays and Sundays 1-4pm

ACTIVITIES IN MILWAUKEE NEIGHBORHOODS

Continued from Page 3

What? MILWAUKEE DISCOVERY WORLD *When?* Wed. thru Sun. 9am-4pm. *Where?* 500 N. Harbor Dr. *Description* A science and technology center and museum. <https://www.discovery-world.org/> *Admission* \$14-\$20.

What? HARLEY-DAVIDSON MUSEUM *When?* Daily 10am-5pm. *Where?* 400 W. Canal St. *Description* Exhibits on the history of the Harley-Davidson motorcycle. <https://www.harley-davidson.com/us/en/museum.html> *Admission* \$8-\$22 (4 or under are free).

SPECTATOR SPORTS

What? MARQUETTE WOMEN'S BASKETBALL *When?* Dec. thru early spring. (regular season). *Where?* Al McGuire Center, 770 N. 12th St. *Description* Marquette University women's basketball games *Admission* Some tickets \$5 to \$10.

What? MARQUETTE GOLDEN EAGLES GAMES *When?* Dec. thru early spring. (regular season). *Where?* Fiserv Forum *Description* Marquette University men's basketball games. *Admission* Some tickets at \$5 to \$11.

GET-MOVING ACTIVITIES

What? HANK AARON STATE TRAIL *When?* Daily. *Where?* Multiple access points; see map on website *Description* Opportunity to enjoy natural and urban views and walk or bike trail across Milwaukee, from the lakefront to 94th Pl. <http://hankaaronstatetrail.org/> *Admission* Free.

What? FREE FAMILY SWIM—HAMILTON HS *When?* Tue.'s 7:45-8:45pm, Sat.'s 7:30-8:20am. *Where?* Hamilton HS, 6215 W. Warnimont Ave. *Description* Indoor swimming with swim caps available for purchase (children 7 and under must be accompanied by adult). <https://milwaukeeerecreation.net/rec/Programs/Aquatics/Free-Open-Swim.htm> *Admission* Free.

What? FREE FAMILY SWIM—RIVERSIDE HS *When?* Mon.'s and Wed.'s 7:45-8:50pm, Sat.'s 8:00-8:50am. *Where?* Riverside HS, 1615 E. Locust St. *Description* Indoor swimming with swim caps available for purchase (children 7 and under must be accompanied by an adult). <https://milwaukeeerecreation.net/rec/Programs/Aquatics/Free-Open-Swim.htm> *Admission* Free.

What? FREE FAMILY SWIM—SOUTH DIVISION HS *When?* Thu.'s 7:20-8:20pm. *Where?* South Division HS, 1515 W. Lapham. *Description* Indoor swimming with swim caps available for purchase (children 7 and under must be accompanied by adult). <https://milwaukeeerecreation.net/rec/Programs/Aquatics/Free-Open-Swim.htm> *Admission* Free.

What? INDOOR SKATING *When?* Weekdays, check website for times. *Where?* Wilson Park Arena, 4001 S. 20th St. *Description* Indoor skating. <https://county.milwaukee.gov/EN/Parks/Explore/Community-Centers/Wilson-Ice-Arena> *Admission* \$6.50, \$4.75 juniors and seniors, skate rentals extra.

Continued on Page 5

Happening in the
Menomonee River
Valley
neighborhood



Hank Aaron
State Trail

Access in the Valley and elsewhere.
Travel from the lakefront to 94th Place

ACTIVITIES IN MILWAUKEE NEIGHBORHOODS

Continued from Page 4

What? RUN/WALK TRACK AT THE PETTIT *When?* April, hours vary, see website. *Where?* Pettit National Ice Center, 500 S. 84th St. *Description* Walk or run on 430-meter track with lockers and showers for \$1 extra at limited times. <http://thepettit.com/sports/run-walk-track/> *Admission* \$4 day pass.

What? PUBLIC ICE SKATING AT THE PETTIT *When?* April, hours vary, see website. *Where?* Pettit National Ice Center, 500 S. 84th St. *Description* Indoor ice skating and skate rentals. <http://thepettit.com/public-skate/> *Admission* \$7.50, \$6.50 kids 13-15; \$5.50 kids 4-12 and seniors; free <4.

What? MERRILL PARK PLAYFIELD/COMMUNITY CENTER *When?* Daily 10am-7pm. *Where?* 461 N. 35th St. *Description* Arts and crafts, computer lab, board games, video games, movie night, and foosball. http://www.neighborhoodlink.com/Merrill_Park/pages/223713 *Admission* Free.

ARTS, THEATRE, AND CRAFTS

What? THE WAREHOUSE *When?* Daily, 10am-4pm. *Where?* 1635 W. St. Paul Ave. *Description* Secret Garden exhibit ("Embrace your inner child and step into the wonders of spring.") <https://www.thewarehousemke.org/> *Admission* Free.

What? WALKER'S POINT CENTER FOR THE ARTS *When?* Tue.-Sat. 12-5pm. *Where?* 839 S 5th St. *Description* Ongoing exhibitions in a community setting. <http://wpca-milwaukee.org/> *Admission* Free to look.

What? ART BAR *When?* Daily 3pm-12am. *Where?* 722 E. Burleigh St. *Description* Permanent and temporary art exhibits. <https://www.facebook.com/artbarmke/> *Admission* Adults, free to look.

What? GALLERY AT MILWAUKEE INSTITUTE OF ART & DESIGN *When?* Mon.-Sat. 10am-5pm. *Where?* 273 E. Erie St. *Description* Rotating exhibitions of renowned artists, MIAD students, and MIAD faculty. <http://www.miad.edu/> *Admission* Free.

What? GALLERY 218 *When?* Sat. 12-5pm. *Where?* 207 East Buffalo St. Suite 218. *Description* The cooperative gallery of the Walker's Point Artists Assoc., Inc. <https://gallery218.com/> *Admission* Free, donations welcome.

What? JAZZ GALLERY FOR THE ARTS *When?* Sat.'s 12-5pm. *Where?* 926 E Center St. *Description* New exhibits every other month. <https://riverwestart.org/> *Admission* Free.

What? VAR WEST GALLERY *When?* Thu. thru Sat. 11am-4pm. *Where?* 423 W Pierce St. *Description* Focusing on exhibiting solo shows for emerging and established artists, including full bar for purchases during events. <https://www.varwestgallery.com/about> *Admission* Free to look.

Continued on Page 6

Happening in the
Fair Park
neighborhood



Public ice skating
at the Pettit

500 W. 84th Street

ACTIVITIES IN MILWAUKEE NEIGHBORHOODS

Continued from Page 5

What? TERRY MCCORMICK CONTEMPORARY FINE AND FOLK ART GALLERY *When?* Call (414) 264-6766 to visit. *Where?* 2522 N. 18th St. *Description* Contemporary art by the founder, Evelyn Patricia Terry, along with several friends whose work she exhibits. <https://www.facebook.com/terrymccormick-gallery/> *Admission* Free to look.

ECO/NATURE ACTIVITIES

What? EARLY MORNING BIRDWALK—MENOMONEE VALLEY *When?* Most Tue.'s. 8-10am. Check website. *Where?* Menomonee Valley, 3700 W. Pierce St. *Description* A walk for bird watchers of all levels to explore Three Bridges Park for birds. <http://urbanecologycenter.org/programs-events-main.html> *Admission* Free.

What? EARLY MORNING BIRDWALK—WASHINGTON *When?* Most Wed.'s. 8-10am. Check website. *Where?* Washington Park, 1859 N. 40th St. *Description* A walk for bird watchers of all ability levels to walk through different habitats for birds. <http://urbanecologycenter.org/programs-events-main.html> *Admission* Free.

What? EARLY MORNING BIRDWALK—RIVERSIDE *When?* Most Thu.'s. 8-10am. Check website. *Where?* Riverside Park, 1500 E. Park Pl. *Description* A walk for bird watchers of all ability levels to explore different habitats for birds and other animals. <http://urbanecologycenter.org/programs-events-main.html> *Admission* Free.

What? BOTANY AND HISTORY WALK IN MITCHELL PARK *When?* Apr. 8, Fri. 9am. *Where?* Mitchell Park, 524 W. Layton Blvd. *Description* Chance to learn about wildflowers and other natural features that were at Mitchell Park before the domes. *Admission* \$12.

What? DISCOVERING THE URBAN FOREST *When?* Apr. 10, Sun. 1pm-Jun. 12, 3pm. *Where?* Lyndon Sculpture Garden, 2145 W. Brown Deer Rd. *Description* Chance to discover Lyndon's urban forest; register in advance at <https://www.lydensculpturegarden.org/education/discovering-urban-forest-2022> *Admission* \$10.

FOR THE KIDS

What? MERRILL PARK PLAYFIELD/COMMUNITY CENTER *When?* Weekdays 10am-7pm. *Where?* 461 N. 35th St. *Description* Arts and crafts, computer lab, board games, video games, movie night, and foosball. http://www.neighborhoodlink.com/Merrill_Park/pages/223713 *Admission* Free.

FOR OLDER ADULTS

What? TECH FAIR FOR SENIORS *When?* Apr. 6, Wed. 9:30-10:30am. *Where?* McGovern Park Senior Center, 4500 W. Custer Ave. *Description* Opportunity for older adults to learn about technology. *Admission* Unknown.

Continued on Page 7

Happening in the
Washington Park
neighborhood



Early morning
birdwalk

Washington Park
1859 N. 40th Street

ACTIVITIES IN MILWAUKEE NEIGHBORHOODS

Continued from Page 6

FOR VETERANS

What? VETERANS JOB FAIR *When?* Apr. 11, Mon. am. *Where?* Virtual, register at Milwaukee Job Fair - [Milwaukee Career Fair, Milwaukee, April 11 2022 | AllEvents.in | Online Event](#) *Description* Opportunity for vets to know what employment opportunities are there for them. *Admission* Free to vets and their spouses.

FOOD AND FARMERS MARKETS

What? MILWAUKEE COUNTY WINTER FARMERS MARKET *When?* Through Apr. 9; Sat.'s 8am-11:30am. *Where?* Deer District, 333 W. Juneau Ave. *Description* Fresh produce, meat, eggs, dairy from Wisconsin small farms. <http://www.mcwfm.org> *Admission* Free.

What? MIDWEST VEGAN FEST *When?* Apr. 30, Sat. 11am-5pm. *Where?* Nicolet High School, 6701 W. Jean Nicolet Rd. *Description* Opportunity to experience plant-based foods and chef demonstrations and more. *Admission* Free to \$10.

ENRICHMENT ACTIVITIES

What? ROOFTOP STARGAZING *When?* Apr. 8, Fri. 8-9pm, Apr. 20, Wed. 8-9pm. *Where* Manfred Olson Planetarium, UWM Physics building, 1900 E. Kenwood Blvd. *Description* Gaze at stars and planets through telescopes. <http://uwm.edu/planetarium/shows/special-events/> *Admission* Free.

FAMILY/CHILDRENS' ACTIVITIES

What? EASTER EGG HUNT *When?* Apr. 2, Sat. 10:30am. *Where* Humboldt Park, 3000 W. Howell Ave. *Description* Children aged 1 to 4th grade search for Easter eggs. *Admission* Free.

Jane Jacobs on neighborhood walkways

The sidewalk must have users on it fairly continuously, both to add to the number of effective eyes on the street and to induce the people in buildings along the street to watch the sidewalks in sufficient numbers. Nobody enjoys sitting on a stoop or looking out a window at an empty street.

From *The Death and Life of Great American Cities*.

Happening in the
Bay View
neighborhood



April 2nd, Saturday, beginning at
10:30am

Children's Easter
egg hunt

Humboldt Park

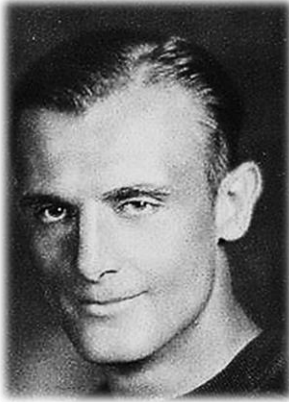
3000 W. Howell Ave.

SPORTS STARS IN MILWAUKEE NEIGHBORHOODS

Continued from Page 1

In the Uptown neighborhood _____

LaVern Ralph "Lavvie" Dilweg (1903-1968) was a professional football player, attorney, and United States Congressman from Wisconsin. Dilweg graduated from Washington High School in the Uptown neighborhood. He enrolled at Marquette University in Milwaukee and played college football for the Golden Avalanche. He also played for the NFL Milwaukee Badgers.



In the Enderis Park neighborhood _____

Walter Otto Dreyer (1923-2002) was an American football player and coach who grew up in the Enderis Park neighborhood. He played professionally as a defensive back and halfback in the NFL for the Chicago Bears (1949) and the Green Bay Packers (1950-1951). Dreyer also served as the head football coach at the University of Wisconsin-Milwaukee (1960-1969).

In the Morgandale neighborhood _____

Ronald John Drzewiecki (1933-2015) was a halfback and defensive back for the Chicago Bears in 1955 and 1957. He grew up in the Morgandale neighborhood and graduated from Boys' Tech High (now Bradley Technology) and Marquette University.



Photo by Marquette University Athletics - Original publication: <https://archive.today/GQa4N> Immediate source: <https://archive.today/GQa4N>, Fair use, <https://en.wikipedia.org/w/index.php?curid=70004274>



In the Franklin Heights neighborhood _____

Oscar Emil "Happy" Felsch (1891-1964) was a center fielder in the major leagues who played for the Chicago White Sox from 1915 to 1920. He grew up in Milwaukee on North 26th Street. He was notoriously known for his involvement in the 1919 Black Sox scandal. Before the majors he had played for the American Association's Milwaukee Brewers.

In the Washington Heights neighborhood _____

George James Hekkers (1923-2008) was an NFL player for the Detroit Lions, and the Baltimore Colts from 1947 to 1949 as a tackle. He grew up on N. 58th Street in the Washington Heights area. He'd also played at the collegiate level for the University of Wisconsin-Madison.

In the Riverwest neighborhood _____

Edward Joe Jankowski (1913-1996) played running back for five seasons for the Green Bay Packers. He was raised in the Riverwest area. Jankowski was inducted into the Green Bay Packers Hall of Fame in 1984.

Paul Edward Schramka (1928-2019) was a left fielder for the Chicago Cubs in the early 1950s. He grew up on E. Burleigh Street in Riverwest.

In the Forest Home Hills neighborhood _____

Joseph John Hauser (1899-1997), ("Unser Choe") was an American baseball player who was a first baseman in the major leagues from 1922 to 1929, with the Philadelphia Athletics and Cleveland Indians. He grew up on Milwaukee's South Side in the Forest Home cemetery area. In the minors, Hauser made a name for himself when he became the first player ever to hit 60 or more home runs twice in a professional career (in the minors), 63 in 1930 and 69 in 1933.



Continued on Page 9

SPORTS STARS IN MILWAUKEE NEIGHBORHOODS

Continued from Page 8

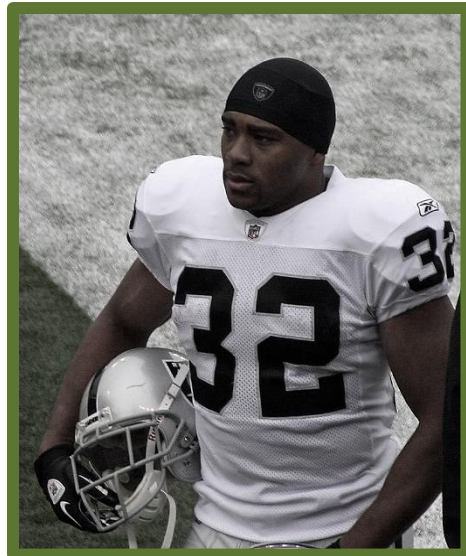


In the Walker's Point Neighborhood

John Peter Kleinow (1877-1929) was a reserve catcher in the major leagues who played for the New York Highlanders (1904–10), Boston Red Sox (1910–11), and Philadelphia Phillies (1911). He grew up on Pierce St. in the Walker's Point area.

Michael A. Bennett (1978-) is a retired running back in the National Football League. He attended Milwaukee Trade and Technical High School (today's Bradley Technology and Trade School) in Milwaukee's Walker's Point neighborhood. He was drafted by the Minnesota Vikings in 2001 and became a Pro Bowl selection in 2002. He also played college football at Wisconsin.

Photo by Jeffrey Beall - Own work, CC BY-SA 3.0, <https://commons.wikimedia.org/w/index.php?curid=11894526>



In the Merrill Park Neighborhood

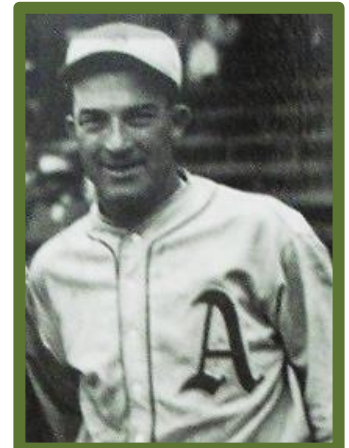
Richard Francis Bilda (1919-1996) was an American football player. He graduated from Marquette University High School in the Merrill Park area. He played for the Green Bay Packers, and in 1944 he was a member of the championship team where he played in three games. Bilda also played for the New York Giants.

Terence Patrick Brennan (1928-2001) was an American college football player and coach. He'd been a respected multi-sport athlete at Marquette University High School in the Merrill Park neighborhood. Brennan served as the head football coach at the University of Notre Dame from 1954 to 1958, with an impressive career record of 32–18.

Robert Allen Botz (1935-) is a retired Major League relief pitcher. He was born to a family from the Merrill Park area on Mt. Vernon Street. After his birth, the family moved to Greenfield. Botz was initially signed by the Milwaukee Braves as a free agent before the 1955 season. He was later traded to the Los Angeles Angels in 1962.

In the Historic Mitchell neighborhood

Born Alois Szyman-ski, *Aloysius ("Al") Simmons* (1902-1956) was an outfielder for the Philadelphia Athletics during the late 1920s and early 1930s. He spent most of his life living in Milwaukee's Historic Mitchell Street neighborhood. Al Simmons also played outfield for the Chicago White Sox, Detroit Tigers, Washington Senators, Boston Braves, Cincinnati Reds and Boston Red Sox, and later served as a coach for the Athletics and Indians.

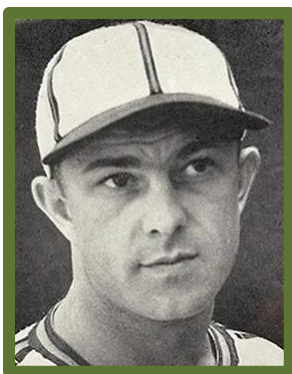


He was inducted into the Baseball Hall of Fame in 1953. His career average was .334.

Photo by mojumbo22 (Original version)たいすけ55 (Crop) - cropped from, CC BY 1.0, <https://commons.wikimedia.org/w/index.php?curid=30120471>

In the Silver Spring neighborhood

Daniel Anthony Turk (1962-2000) was a center and long snapper for the Pittsburgh Steelers, Tampa Bay Buccaneers, Oakland Raiders, and Washington Redskins. He grew up in Milwaukee where he attended James Madison High School (now James Madison Academic Campus) in the Silver Spring neighborhood. Turk also played at Madison.



Fabian Sebastian Gaffke (1913-1992) was a right fielder who played in the major leagues for the Boston Red Sox (1936–39) and Cleveland Indians (1941–42). He grew up on Greenbush Street (now South 4th) in the Walker's Point area of Milwaukee.

Continued on Page 10

SPORTS STARS IN MILWAUKEE NEIGHBORHOODS

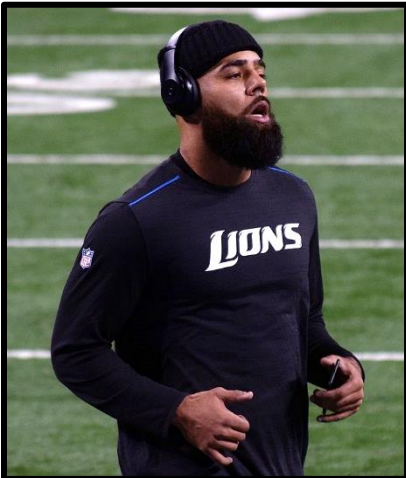
Continued from Page 9

In the Midtown neighborhood

Marcus Landry (1985-) is a retired American basketball player who last played for Goyang Ori-ons of the Korean Basketball League. He attended Vincent High School (today's Vincent High School of the Arts) in Milwaukee's Midtown neighborhood. Landry also played collegiate basketball at Wisconsin (2005-2009).



Photo by Shuhei S from Tokyo, Japan - DSCF2156, CC BY 2.0, <https://commons.wikimedia.org/w/index.php?curid=77458303>



DeAndre Levy (1987-) is a retired linebacker for the Detroit Lions (drafted in 2009). He was born in Milwaukee and attended Vincent High School (now Vincent High School of the Arts) in the Midtown area. Levy also played collegiate football for Wisconsin.

Photo by Kevind810 - Own work, CC BY-SA 4.0, <https://commons.wikimedia.org/w/index.php?curid=74849632>

In the Hampton Heights neighborhood

Kenneth Andrew Kranz (1923-2017) played defensive back for the Green Bay Packers in 1949. He was raised in the Hampton Heights neighborhood (then Granville) where he graduated from Custer High School. At Custer he played football and soccer.

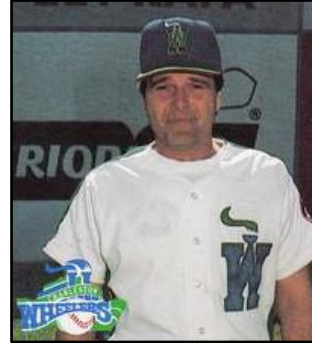
Jimmy Banks (1964-2019) was a soccer defender who spent six seasons playing soccer with the Milwaukee Wave. He lived on Milwaukee's northwest side and graduated from Custer High School. After retiring from playing professionally, Banks entered the coaching ranks with the Milwaukee School of Engineering men's team.

In the Juneau Town neighborhood

David Braden (1917-1980) was a member of the Chicago Cardinals of the National Football League during the 1945 NFL season. He'd attended St. John's Cathedral High School in the Juneau Town neighborhood before playing at the college level with the Marquette Golden Avalanche.

In the Grantosa neighborhood

Gregory John Mahlberg (1952-) is a retired baseball catcher, manager and coach. Mahlberg attended Wisconsin Lutheran High School in Milwaukee's Grantosa neighborhood and the University of Wisconsin in Madison. He played briefly in the major leagues in 1973 for the Texas Rangers.



Nicholas Alexander Roach (1985-) is a retired linebacker for the San Diego Chargers. Roach attended Milwaukee Lutheran High School in the city's Grantosa neighborhood. Roach also played for Chicago and Oakland.

Photo by BluEyedA73 - file:2009 Chicago Bears Football 101.jpg, CC BY 2.0, <https://commons.wikimedia.org/w/index.php?curid=29695021>



In the Muskego Way neighborhood



John Raymond Strzykalski (1921 - 2002) was a half-back for the San Francisco 49ers. He grew up in Milwaukee's Muskego Way area. Strzykalski was drafted out of Marquette University by the Green Bay Packers in 1946.

Continued on Page 11

SPORTS STARS IN MILWAUKEE NEIGHBORHOODS

Continued from Page 10

In the Lincoln Village neighborhood

Born Joseph Erwin Juszczak, *Joseph Erwin Just* (1916-2003) was a major league catcher with the Cincinnati Reds. He appeared in 25 games with the Reds during World War II. He later managed various Milwaukee Braves minor league teams between 1955 and 1958.



Anthony Christopher Kubek ("Tony") (left) (1935-) played baseball for the New York Yankees, including in six World Series between the late 1950s and the early 1960s. He grew up in the Lincoln Village neighborhood near Baran Park. He later became a broadcaster for NBC and received the Ford C. Frick Award in 2009.

In the Silver City neighborhood

Leroy Herbert Schoemann (1914-1972) was a center for the Green Bay Packers during the 1938 NFL season. He spent his early years on S. Shea Avenue in Milwaukee's Silver City neighborhood.

In the Rufus King neighborhood



Michael Sharod Wilks, Jr. (1979-) is an NBA assistant coach for the Oklahoma City Thunder. He was raised in Milwaukee and attended Rufus King High School in the neighborhood of the same name. Wilks also played professional basketball for the NBA Development League.

Photo by Keith Allison - originally posted to Flickr as 317, CC BY-SA 2.0, <https://commons.wikimedia.org/w/index.php?curid=6352060>

In the St. Joseph neighborhood

Donald John Kindt, Sr. (1925-2000) was a defensive back and halfback who played nine seasons for the Chicago Bears (1947-1955). He grew up in the St. Joseph neighborhood in the Sherman Park area. Kindt also played college football for the University of Wisconsin Badgers.



In the Brewer's Hill neighborhood

Robert George Uecker (1934-) is a retired major league catcher and is today the broadcaster for the Milwaukee Brewers. He grew up on 3rd Street (now Martin Luther King Drive) and Garfield on the border between the Brewer's Hill and Halyard Park neighborhoods. He was dubbed "Mr. Baseball" by TV talk show host Johnny Carson and went on to become a comedian and actor. Uecker has received the Ford C. Frick Award in 2003 for broadcasting.

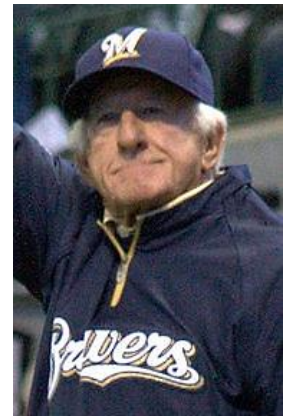


Photo by Steve Paluch - Own work, CC BY-SA 3.0, <https://commons.wikimedia.org/w/index.php?curid=49368556>

Ten-part series continues on celebrities that lived in Milwaukee neighborhoods

Have you ever wondered who might have lived in your Milwaukee neighborhood? For ten issues, *Milwaukee Neighborhood Forum* features nationally recognized celebrities that once resided on our city's blocks.

The order follows:

- (1) Political/Activist leaders (December issue),
- (2) Military leaders (February issue),
- (3) Writers/Journalists (April issue),
- (4) Religious leaders (June issue),
- (5) Scientists (August issue),
- (6) Artists (October issue),
- (7) Musicians (December issue),
- (8) TV/Film stars (February issue),
- (9) Sports heroes, (this issue) and
- (10) Corporate leaders.

Beerline B: One of the city's most malleable neighborhoods

The area that is today's Beerline B neighborhood was named after a railroad line that once operated within its boundaries. Over the generations, today's Beerline B territory was claimed by the neighborhoods of Riverwest and Brewer's Hill.

Beerline B is concentrated around one street--Commerce. The Holton Viaduct with its marsupial bridge runs overhead through the center of the Beerline, connecting the Brady Street neighborhood with Holton Street and the Brewer's Hill, Riverwest, and Harambee neighborhoods (see photo on next page). Beerline B also includes several connections between the neighborhood on the hill and the Milwaukee River, including Kilbourn Park, Booth Street Stairs, and the Milwaukee Rowing Club. Condominiums line both sides of Commerce Street.

The only building that is not residential is the structure that houses the Lakefront Brewery (see below). This building was constructed in 1908 to house the coal burning power plant for the Milwaukee Light and Power Company, and purchased by Lakefront Brewery in 1998.



Lakefront Brewery

Early populations

The earliest population of today's Beerline B was Polish. There is some evidence that Poles were living in that area as early as the 1850s. In 1854, a family of five Polish immigrants perished when their 12-foot by 12-foot shanty caught fire in an area that was somewhere between East Brady Street and the Milwaukee River. The fire department did not immediately respond because the officers initially thought the blaze was outside the city limits.

In Tom Tolan's comprehensive history of the area in *Riverwest: A Community History*, he documents the historic settlements from the early industrial developments on the river's banks to the defining moments in Riverwest culture in the 60s and 70s and beyond. He discusses the Polish Kashubes in the area around Brady Street and the Milwaukee River. According to Tolan, the Polish neighborhood, or *Kompa*, "was the closest thing you could get in the middle of an American industrial city to a rural Polish village. Most residents kept ducks, geese, and chickens, and a good number had pigs, cows, or goats as well." The area next to the Milwaukee River would remain essentially Polish (with some Germans, Irish, and Italians) until the 1960s.

Commerce Street

Commerce Street today defines the emerging neighborhood of Beerline B. The area where the street is located was once a portion of a canal. In 1839, Ohio canal builder and Milwaukee land developer, Byron Kilbourn, had a plan to build a canal between the Milwaukee River and the Rock River which would

ultimately provide a waterway to the Mississippi River. However, a competing canal company convinced the state legislature that a route between Green Bay and the Mississippi River would be a more pragmatic trading course and dropped support for Kilbourn's venture. Hence the canal was never completed and never got further than Kilbourn Avenue. In the meantime, the diminutive canal was used for water sources for businesses along its route, including tanneries, breweries, lumberyards, and other industrial spaces. In the late 1800s that chunk of the canal was filled in and Commerce Street emerged.

One of the first major enterprises to appear on Commerce Street was the Albert Trostel & Sons Tannery. The massive facility was one of the largest tanneries in the world and would become one of Milwaukee's largest employers for nearly 100 years.

The neighboring Beerline B (built in the 1850s) provided service to the industries on Commerce and the Schlitz, Blatz, and Pabst breweries just south of today's neighborhood. The line followed the west bank of the Milwaukee River along Commerce Street and had a roundhouse on Humboldt Boulevard and North Avenue where a Pick & Save store later stood. The street remained an industrial corridor long into the 20th century.

By late in the 20th century, the national trend toward deindustrialization was affecting the businesses on Commerce Street. The massive Trostel Tannery was decommissioned in the 1970s and the main building was imploded in the 1980s. The State of Wisconsin purchased the property with the intention of turning it into a prison. But residents balked and the proposal was abandoned. By this time most of the industries along Commerce Street had closed and the street lingered as a weedy eyesore for north side drivers heading downtown.

Change began when the Redevelopment Authority of the City of Milwaukee started to clean up the corridor. As they did, developers took notice. At the close of the 20th century the former industrial properties were being transformed into housing complexes, retail spaces, and diverse uses such as a rowing club. The site of the former Trostel Tannery was sold to a developer and transformed into Trostel Square—a riverfront complex consisting of two apartment buildings, two townhouse buildings, and one with both apartments and town homes.

Businesses also took notice. In 1998 Lakefront Brewery, which had been housed in an old bakery building in Riverwest moved to an antique power plant on Commerce. The giant among craft beers immediately attracted outsiders to the developing corridor with its lagers, pretzels, daily brats, Friday fish fries, and Sunday brunches.

Current populations (as of 2021)

Today's Beerline B residents are mostly condominium owners with middle- (and sometimes upper middle-)

Continued on Page 13

BEERLINE B, A MOST MALLEABLE NEIGHBORHOOD

Continued from Page 12

class household incomes. The former industrial corridor along Commerce Street today consists of over 15 condo developments. Each of the Beerline B projects has between 15 and 126 units.



Condos on Commerce St.

INTERESTING NEIGHBORHOOD FEATURES

- **Lakefront Brewery** at 1872 N. Commerce, is a craft beer producer and a popular restaurant (see photo).
- **Beerline Café** at 2076 N. Commerce, is a vegetarian restaurant.
- **Kadish Park**, on the northern boundary of the Beerline B neighborhood, has an amphitheater that features free music and theatrical performances.



The Holton Viaduct and Marsupial Bridge

QUOTES FROM RESIDENTS

Quotes from 2005 oral history of Riverwest conducted by Urban Anthropology Inc.—About then

“I’m thinking about the time when the train still went through there—the Beerline. The wonderful little railroad was one of the busiest routes that the city used to get the beer out of town.”

“I think that, except for maybe some of these condos going up, I think everyone has been pretty much the same social class. Y’know? I guess maybe there’s a middle, sort of a middle class and a lower class, but there’s not filthy rich people driving limos around Riverwest.”

Quotes from 2021/22 oral history of Beerline B conducted by Urban Anthropology Inc.—About then

“One interesting thing is that my father was a Milwaukee firefighter and he worked sort of in that neighborhood. So, he was a firefighter in that neighborhood and he got called out on a run. And it was for a body. And they found a body that was on the hill that ran along Commerce Street. So, it was between Lakefront Brewery and Humboldt. And so, they called the fire department because they needed someone to help them get a line down the hill so that they could take this body off the hill. So, my dad was the driver and so he was kinda asking the guys, like: ‘Oh, well, who found the body?’ and then the police officers said: ‘Oh the surveying crew found the body.’ And he was like: ‘oh really? Why are they surveying?’ and he said: ‘oh, they’re going to build condos here.’ And my dad was like: ‘Condos here? Who’s going to live here?’ And that was probably in the late eighties, early nineties. And so, his recollection of the area was like: ‘Nobody’s going to fricking want to live here.’ and he was wrong. My dad loves to tell that story.”

“Well Commerce Street, that was the original industrial park of Milwaukee. It’s where the canal was until they filled the canal in. And then they, you know, put the street where the canal was and so that was industrial until I moved down here and then they started building condos down here. So now it’s mostly professionals or people who have retired or something on that side.”

Continued on Page 14

¹ Urban Anthropology Inc. complies with human subjects requirements of formal research and asks informants to sign informed consent forms that stipulate anonymity, hence names are not provided with the quotes.

BEERLINE B, A MOST MALLEABLE NEIGHBORHOOD

Continued from Page 13

Quotes from 2021/22 oral history of Beerline B conducted by Urban Anthropology Inc.—About then (continued)

“If you come down here to the Beerline B, I mean, you had tanneries, you know, we are in an electrical building. Right next to us were big coalfields. That’s where the coal from Milwaukee all came in and was dumped on the side of the riverbanks, just up north to us. And so that was all there, but they only had like warehouses. Right next to us was the Gimbel’s warehouse and then Trostel Tannery. Schlitz brewery was right down the river on the Beerline. So those are different things that came about our industries. Now there’s Lakefront Brewery, yeah. That’s about it (laughs) for us here, and then you go up to Riverwest and you got different ones up there.”

Quotes from 2005 oral history of Beerline B by Urban Anthropology Inc.—About now

“My objection to the new developments on Commerce Street is that they did not integrate. The objection is not race-based, but class-based. In order to rebuild a community neighborhood, you need to integrate not based upon income. A lawyer may be black or white, but still a lawyer and costs keep going up. It would be nice if the city would do what we asked the suburbs to do and that is to integrate a variety of income levels into a neighborhood.”

“I’m sort of mystified by the whole condo phenomenon; it seems like they’re building them nonstop. And I have trouble believing that they’re going to find that many people to live there. And like when I walk down commerce street it’s really strange because it seems like there’s, there’s all these condos but there’s no cars and there’s no traffic, and I don’t see people walking around so, but maybe I’m wrong about that.”

“But there has been, among some of the punk element, ever since the Commerce Street area started getting developed, there’s always been this weird gentrification of yuppies just about ready to move in and take over, so there’s been some obvious political graffiti from time to time against that. People were happy when one of those in-construction condos down there burned down. There was even the thought that maybe someone was an arson for that reason. Someone spray painted ‘yuppies still suck’ on one of the billboards in the Brewers Hill developments.”

“I think the reaction to the condos on Commerce was different by people from Riverwest than it was from Brewer’s Hill. In Riverwest it was, like, ‘you should try to be more like us,’ where in Brewer’s Hill they were trying to promote the whole home-ownership line and this didn’t include the renters or the condo owners—it was preserving the old houses. That’s just my take.”

“[Beerline B resident] I feel like some of the people in Riverwest feel that we should be more social and hang out with them. But what we have I think is our own neighborhood that’s starting to gel.”

Quotes from 2021/22 oral history of Riverwest by Urban Anthropology Inc.—About now (continued)

“The Commerce Street area has definitely changed. I mean you can google the history of Commerce Street because they tried to build a canal there and it was gonna connect the lake with, I don’t know, the Mississippi River or something. I mean I’m sure you’ve seen all kinds of pictures of what Commerce Street used to look like. And you should see pictures now what it looks like, because it’s full of condominiums. Completely redeveloped! It’s a kind of a residential area now.”

“The Beerline has changed beyond recognition since the Rowing Club moved there in 1991. So, we moved downtown and the essence of what we were doing at that time was to change this industrial landscape, this kind of industrial wasteland into a new center of urban living with residential retail. I mean, no more tanneries, right. No more ironworks (laughs).”

“Now the downtown river not only doesn’t smell, it has fish in it. People kayak on it, people row on it. People do all kinds of things on it. It’s a very pleasant place to live. And so whatever Milwaukee’s problems are, downtown is flourishing and the river is flourishing.”

“It used to be perceived as unsafe to walk along the river there. And now, you know, because of the Milwaukee River Greenway Project and with the help of the River Revitalization Foundation, that area has become this like gem.”

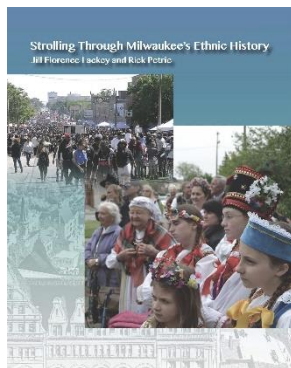
“And then just the activity. There’s a brewery and just the life that’s out on the river and in the public spaces. It is all very specific to the area, the way that it was developed, not just for residential developments, but we also really focused on public spaces, public green spaces and then connecting to the neighborhoods around it through a series of different stairwells.”

“They changed in that it was, you know, all commercial and nobody really lived there. And now it’s probably more white, upper class than anything because of the condominiums. But up at the top of the hill the entire Riverwest neighborhood is very diverse. I think that it’s probably still pretty Polish.”

“Well Commerce Street, that was the original industrial park of Milwaukee. It’s where the canal was until they filled the canal in. And then they, you know, put the street where the canal was and so that was industrial until I moved down here and then they started building condos down here. So now it’s mostly professionals or people who have retired or something on that side.”

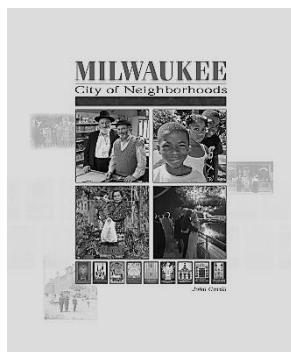


Books on Milwaukee Neighborhoods



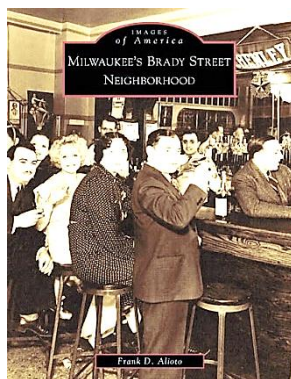
Strolling through Milwaukee's Ethnic History By Jill Florence Lackey and Rick Petrie

This latest work provides an "up close and personal" look at local ethnic life by directing readers to the neighborhoods and venues where the groups left their marks. It brings readers directly into their experiences, whether it involves strolling through the neighborhoods they built or participating in contemporary ethnic activities. "Strolling . . . is an intriguing guide to the ethnic history in our midst and a colorful reminder that Milwaukee has always been a city of newcomers." - John Gurda. <http://mecahmilwaukee.com>



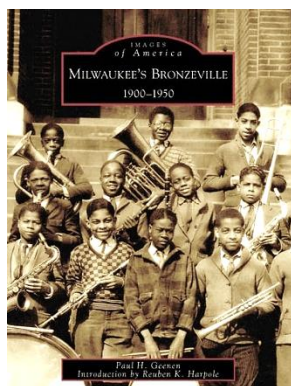
Milwaukee, City of Neighborhoods By John Gurda

Milwaukee: City of Neighborhoods is the most comprehensive account of grassroots Milwaukee ever published. Richly illustrated, engagingly written, and organized for maximum ease of use, the book is a fine-grained introduction to the Milwaukee community, and its communities, that will endure as a standard work for years to come. <https://historicmilwaukee.org/milwaukee-city-of-neighborhoods/>.



Milwaukee's Brady Street Neighborhood By Frank D. Alioto

Milwaukee's Brady Street neighborhood began in the mid-19th century as a crossroads between middle-class Yankees from the east and early German settlers. Polish and Italian immigrants soon followed, working the mills, tanneries, and brewers that lined the riverbank. The hippies arrived in the 1960s. By the 1980s the area fell into blight, neglect and decay. Now, a true model for new urbanism, the Brady Street neighborhood is the midst of a renaissance. <https://www.arcadiapublishing.com/Products/9780738551746>



Milwaukee's Bronzeville: 1900-1950 By Paul H. Geenen, Introduction by Rueben Harpole

With the migration of African American sharecroppers to northern cities in the first half of the 20th century, the African American population of Milwaukee grew from fewer than 1,000 in 1900 to nearly 22,000 by 1950. Most settled along Walnut Street, an area that came to be known as Milwaukee's Bronzeville, a thriving residential, business, and entertainment community. Bronzeville is remembered by African American elders as a good place to grow up. <https://www.arcadiapublishing.com/Products/9780738540610>

The dramatic gift of one author

Mystery writer and Milwaukee native, Sienna Jacks, is creating a series of novels that take place in Milwaukee neighborhoods called "The Milwaukee Series." She is donating all of her royalties to Urban Anthropology's neighborhood exhibits' program.

The proceeds from *The House Off of Brady* (see following page) are currently being used to create all new exhibits at the Rozga Family's Old South Side Settlement Museum.

Mystery novels that are currently available or shall eventually be included in this series will take place in these Milwaukee neighborhoods:

- Brady Street
- Bronzeville/Brewer's Hill
- Lincoln Village
- Walker's Point
- Riverwest
- Granville

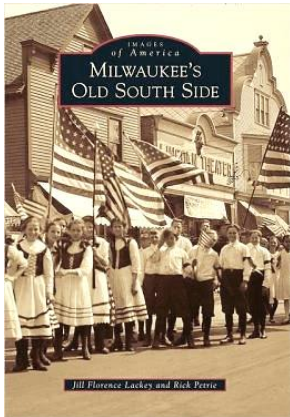
Currently, all of Sienna Jacks' novels have perfect five-star ratings from readers at [Amazon.com](https://www.amazon.com)

To enjoy wonderful reading and to contribute to neighborhood museums and exhibits, purchase the Jacks' books from the publisher at

<http://mecahmilwaukee.com/Fiction.html>

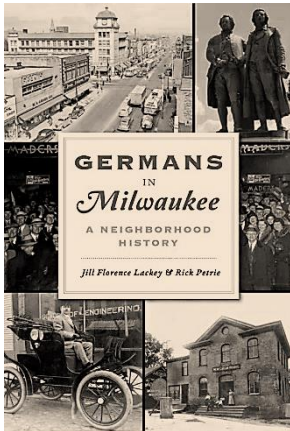


Books on Milwaukee Neighborhoods (Cont.)



Milwaukee's Old South Side
By Jill Florence Lackey and Rick Petrie

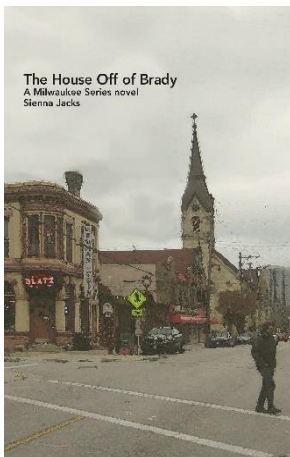
In the late 1800s, the Old South Side was developed by immigrant Poles, who became the dominant population for over 100 years. While other Milwaukee ethnic neighborhoods gradually dissipated in the mid-20th century because of assimilation pressures, freeway building, or urban renewal programs, the Old South Side remained solidly Polish. A survey nearly a half century later revealed that people of 110 national backgrounds now lived in the Old South Side, with the three largest groups being Mexicans, Poles, and American Indians. <https://www.arcadiapublishing.com/Products/9780738590691>



Germans in Milwaukee: A neighborhood history
By Jill Florence Lackey and Rick Petrie

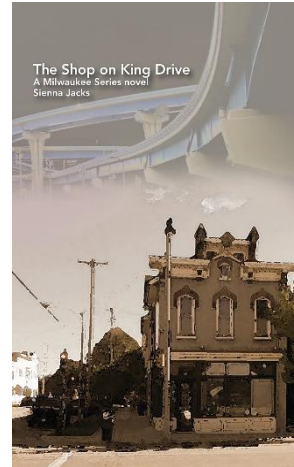
Germans dominated Milwaukee like no other large American city. Their presence inhabits the city's neighborhoods, from its buildings and place names to its parklands and statuary. Their influence also lives in the memories shared by local residents. A small Milwaukee neighborhood south of Miller Valley was christened after a farmer's pigs, and a busboy turned beer baron built the famous Pabst Brewery in West Town. A ghost is said to haunt the old Blatz Brewing compound. And the remains of the early tanning industry can still be seen in Walker's Point. Compiling more than 1,200 interviews, authors Jill Florence Lackey and Rick Petrie share these ground-level perspectives of the lasting German influence on the Cream City. www.arcadiapublishing.com/Products/9781467147286

Fiction



The House Off of Brady A Milwaukee Series novel
By Sienna Jacks

Two young anthropologists, trying to convince a local nonprofit to sponsor a neighborhood house museum, must show that the historical occupants of the house were representative of Milwaukee's Brady Street, and that they project positive images for the neighborhood. Their efforts are boosted by a personal journal left behind by one of the home's occupants--Giuseppe Russo. But as the young anthropologists translate and transcribe the journal, they learn that Giuseppe had been banished from his former community in the Third Ward. Are they about to stumble on information that could kill the project—or something perhaps even worse? <http://mecahmilwaukee.com>

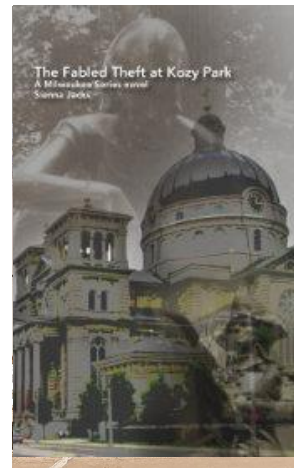


The Shop on King Drive A Milwaukee Series novel
By Sienna Jacks

A mystery arises out of the ruins of urban renewal. Two young anthropologists, conducting research that would illuminate one dark period in Milwaukee's central city history, confront painful but sometimes puzzling accounts. During the 1950s and 1960s, over 8,000 homes and an entire business district of the African American Bronzeville community were razed. While

interviewing survivors, the anthropologists note that the name of a particular attorney kept entering the conversation. The lawyer claimed to be helping the black community fight the removal, but his efforts had the opposite effect. Suspicions remained for over 50 years over who was behind the deception and why. <http://mecahmilwaukee.com>

The Fabled Theft at Kozy Park A Milwaukee Series novel
By Sienna Jacks



The anthropologists at City Anthropology were asked to use their research skills to look into a man's confession that might crack the longest unsolved mystery on Milwaukee's old South Side—the theft of the squirrel lady statue at Kozy Park. According to reports, the man Raf (now deceased) also implicated members of a local Polish club with an agenda of removing non-Polish influences from the neighborhood. Assigned to the project, Enid and Meyer are baffled by the information they are getting from those who witnessed the confession, little of which supports Raf's story. Further inquiry points to events surrounding Raf's stepson. Who really was he and why did he inexplicably appear on the scene all those years ago? Their quest for answers leads them to the club in question, but with unexpected results. The ultimate mystery they must solve is the true reason why Raf made this confession and steered them to a list of alleged conspirators.

<http://mecahmilwaukee.com>

Milwaukee Neighborhood Forum

Milwaukee Neighborhood Forum is published bimonthly by Urban Anthropology Inc. and is managed by volunteer anthropologists. The purpose of the newsletter is to offer neighborhood groups and individuals opportunities to share news and information about their neighborhoods. The newsletter does not receive funds from any external source. The editor is Dr. Jill Florence Lackey.

Subscriptions

The newsletter is emailed to anyone wishing to receive it. If you wish your email or that of a friend to be added to the subscriber list, send the email addresses to JFLanthropologist@currently.com and indicate the name of this publication.

Submitting events

Milwaukee Neighborhood Forum is interested in events from individuals, businesses, and organizations that have a neighborhood appeal. These can include block parties, church picnics, local music festivals, sports on the block, get-moving activities that take place outdoors, and art and theatre events involving neighborhoods. All event submissions should include a one-sentence description, date and time, location, and website or phone number for additional information. Photos may also be submitted.

Submitting stories/press releases on neighborhoods

In the spirit of Jane Jacobs, stories should always focus on assets of neighborhoods. They must be between 100 and 400 words. Some editing will be done to match our style guidelines and spatial constraints. We will write the stories for you if you simply send us a list of the information that you want included. A photo is always required.

Submission deadlines

Submit events or stories by the 25th of the month preceding publication. Publication dates are on the 1st day of June, August, October, December, February, and April. Please send your stories to Dr. Jill at JFLanthropologist@currently.com.

Now live . . .

Website on 191 Milwaukee neighborhoods

Links on each neighborhood include:

- *6 to 35 pages of information*
- *Brief neighborhood description*
- *Population-focused history (including ethnic roots)*
- *Snapshots of commercial districts of the past*
- *Quotes from residents*
- *Quotes from oral histories (where available)*
- *Low cost nearby outings for families*
- *Demographics of current neighborhood*
- *Photos of neighborhood*

The website currently includes ALL 191 of the neighborhoods, courtesy of Urban Anthropology Inc.

<http://neighborhoodsinmilwaukee.org/>