



Milwaukee Neighborhood Forum

PUBLISHED BY URBAN ANTHROPOLOGY INC. "IN THE TRADITION OF JANE JACOBS" FEBRUARY/MARCH EDITION

Milwaukee Neighborhood Forum is a bimonthly newsletter that highlights assets, history, events, and resources for and about Milwaukee neighborhoods. Residents and neighborhood organizations are encouraged to submit press releases on their events and successful programs. See back page for details.

February and March in-person activities in Milwaukee neighborhoods (most under \$10)

Total of 66 events under the categories of museums, arts, family, kids, special interests, enrichment activities, outdoor events, walks/tours, food/farmers markets, and get moving activities

NEIGHBORHOOD TOURS/WALKS

What? SKYWAUKEE WALKING TOUR Sat., Feb. 5 3:00pm. **Where?** Meets in the street level lobby of the Plankinton Building, 161 W. Wisconsin Ave. **Description** Historic Milwaukee Inc. tour that explores the architectural and cultural history of Milwaukee's landmarks while staying indoors. <http://historicmilwaukee.org/walking-tours/> **Admission** Free to \$15.



What? THE HOP STREET-CAR TOUR Fri., Feb 4, 1:00pm. **Where?** 235 E. Michigan Ave. **Description** Historic Milwaukee Inc. tour that explores urban renewal from the edge of the Menomonee Valley to the downtown Yankee Hill neighborhood. <http://historicmilwaukee.org/walking-tours/> **Admission** \$5 to \$15.

What? SELF-GUIDED TOUR OF VA GROUNDS **When?** Daily, daylight **Where?** Just north of Zablocki VA Medical Center, 5000 W. National Ave. **Description** A walk through the historic district

Continued on Page 2

Internationally recognized TV/film stars that once lived in Milwaukee neighborhoods



Eighth of a ten-part series on Milwaukee celebrities

In the Sunset Heights neighborhood

Born Jerome Silberman, Gene Wilder (1933-2016) was an actor of stage, screen, and television. Sometime in the 1930s the family of Jerome Silberman moved from a rented apartment on North 56th Street to another rented unit at 3210 North



44th in the Sunset Heights/Sherman Park neighborhood. Jerome, the son of William and Jeanne Silberman, Jewish immigrants from Russia, took an early interest in acting when he saw his older sister Corrinne perform in a play. The youth later began using the moniker of Gene Wilder as his stage name. His first major film role was in *The Producers*, for which he received an Academy Award nomination for Best Supporting Actor. He later starred in and co-wrote *Young Frankenstein* and *Blazing Saddles* for which he received multiple Academy Award nominations, including for Best Adapted Screenplay. Wilder is perhaps best known for his role in *Willy Wonka & the Chocolate Factory*. He also directed several films.

Continued on Page 11

ACTIVITIES IN MILWAUKEE NEIGHBORHOODS

Continued from Page 1

just north of the VA Center, which includes the Soldiers' Home, barracks building, old fire station, old hospital, Ward Memorial Theater, and more. <http://www.milwaukee.va.gov/visitors/campus.asp> *Admission Free.*

What? GUIDED TOUR OF BASILICA OF ST. JOSAPHAT
When? Reserve tour on website. *Where?* Basilica of St. Josaphat, 2333 S. 6th St. *Description* Opportunity to see and learn about one of the most beautiful churches in America. <http://thebasilica.org/visit> *Admission Free.*

What? UNGUIDED TOUR OF BASILICA OF ST. JOSAPHAT
When? Mon.-Fri., 9am-3pm *Where?* Visitor's Center, Basilica of St. Josaphat, 2333 S. 6th St *Description* Opportunity to see and learn about one of the most beautiful churches in America with informational exhibits on lower level. <http://thebasilica.org/> *Admission Free.*

What? WALK THROUGH MILWAUKEE'S LATINO HISTORY
When? Daily *Where?* United Community Center, 1028 S. 9th St. *Description* Opportunity to learn about Latino history by visiting tannery and foundry exhibits, photos, and art inside the UCC building, and historical murals on two sides of Bruce Guadalupe School next door. <http://www.unitedcc.org/index.htm> *Admission Free.*

What? SELF-GUIDED TOUR OF FOREST HOME CEMETERY
When? Daily 8am-4:30pm *Where?* 2405 W. Forest Home *Description* Tour the beautiful Chapel Gardens, Landmark Chapel, and the Hall of History that tells the story of Milwaukee dignitaries, including European founders of Milwaukee, several mayors, major African American activists, and brewery tycoons. *Admission Free.*

MUSEUMS IN THE NEIGHBORHOOD

What? ROZGA FAMILY'S OLD SOUTH SIDE SETTLEMENT MUSEUM *When* Reserve group tour at JFLanthropologist@currently.com *Where?* 707 W. Lincoln Ave. *Description* Exhibits of the history, celebrities, and populations of the area; miniature Polish flat that the kids love. *Admission Free.*

What? CHARLES ALLIS ART MUSEUM *When?* Wed. thru Sun. 10am-4pm, reservations helpful as hours may vary. *Where?* 1801 N. Prospect Ave. *Description* Self-guided tour of Tudor-style mansion of entrepreneur Charles Allis designed by Milwaukee architect Alexander Eschweiler in early 20th century. <http://www.charlesallis.org/> *Admission* \$10, \$5 seniors & students.

What? VILLA TERRACE DECORATIVE ARTS MUSEUM
When? Wed. thru Sun. 10am-4pm, reservations helpful as hours may vary. *Where?* 2220 N. Terrace Ave. *Description* Self-guided tour of mansion informed by the design of a villa in

Happening in the Lincoln Village neighborhood



The Rozga Family's Old South Side Settlement Museum

With neighborhood history exhibits and a Depression-era miniature Polish flat (which the kids will love)

707 W. Lincoln Avenue

Continued on Page 3

ACTIVITIES IN MILWAUKEE NEIGHBORHOODS

Continued from Page 2

Lombardy, Italy, complete with Renaissance Garden, and antique furnishings and artifacts. <https://www.villaterrace.org/> Admission \$10, \$7 seniors, military & students.

What? MILWAUKEE COUNTY HISTORICAL SOCIETY *When?* Wed. thru Sat., 9:30am-5pm *Where?* 910 N. Old World Third St. *Description* Permanent and rotating exhibits of Milwaukee County's history plus a research library. Current exhibit, Milwaukee: Where the Waters Meet. <http://www.milwaukeehistory.net/> *Admission* \$7, \$5 seniors, military, students; children ≤ 12 and members free.

What? HAGGERTY MUSEUM OF ART *When?* Daily 10am-4:30pm, Thu. 10am-8pm; Sun, 12-5pm *Where?* Marquette campus at corner of 13th & Clybourn Sts. *Description* Permanent collections include Old Masters' prints, Ralph Steiner photos, Marc Chagall Bible series, Barbara Morgan photos, and Finnegan, Fishman, Tatalovich, and Rojzman collections. <http://www.marquette.edu/haggerty/> *Admission* Free.

What? GROHMANN MUSEUM *When?* Mon.-Fri. 9am-5pm, Sat. 12-6pm, Sun. 1-4pm *Where?* 1000 N. Broadway *Description* More than 1,000 paintings and sculptures representing the long evolution and of human work. <http://www.msoe.edu/about-msoe/grohmann-museum/> *Admission* \$5, \$3 students, seniors; free <12.

What? NORTHPOINT LIGHTHOUSE MUSEUM *When?* Sat. & Sun. 1-4pm *Where?* Northpoint Lighthouse, 2650 N. Wahl Ave. *Description* A historic, maritime experience, with artifacts related to the history of the Great Lakes. <http://northpointlighthouse.org/> *Admission* \$8, \$5 seniors & kids 5-11, free kids <4.

What? GALLERY AT MILWAUKEE INSTITUTE OF ART & DESIGN *When?* Gallery showing exhibits Feb. 1 to Mar. 12, Daily 10am-5pm *Where?* 273 E. Erie St. *Description* Rotating exhibitions of renowned artists, MIAD students, and MIAD faculty. <http://www.miad.edu/> *Admission* Free.

What? MILWAUKEE PUBLIC MUSEUM *When?* Free 1st Thu. each month *Where?* 800 W. Wells St. *Description* Chance to visit one of the premier natural history and science facilities, world-renowned for its exhibits, collections, ongoing scientific research and educational exhibits. www.mpm.edu/ *Admission* Free (on date designated).

What? MITCHELL PARK DOMES *When?* Wed. to Fri., 9am-5pm; Sat., Sun. 9am-4pm. *Where?* 524 S. Layton Blvd. *Description* A place to experience a desert oasis, a tropical jungle, and special floral gardens all in one morning. <http://county.milwaukee.gov/MitchellParkConserva10116.htm> *Admission* Free to \$8 (check to make sure it has reopened).

Continued on Page 4

Happening in the Northpoint neighborhood



Enjoy the seasons at the Northpoint Lighthouse Museum

2650 N. Wahl Avenue
Open Saturdays and Sundays 1-4pm

ACTIVITIES IN MILWAUKEE NEIGHBORHOODS

Continued from Page 3

What? MILWAUKEE FIRE MUSEUM *When?* 1st Sun. of each month, 1-3pm, (except holidays). *Where?* 1516 W. Oklahoma Ave. *Description* Opportunity to see exhibits and artifacts of the Milwaukee Fire Department back to the 1800s; stories of history of the department and fires. <http://city.milwaukee.gov/MUSE-UMHISTORICALSOCIETY.htm#.VkoAEMArLIU> *Admission* Free.

What? MILWAUKEE DISCOVERY WORLD *When?* Wed. thru Sun. 9am-4pm. *Where?* 500 N. Harbor Dr. *Description* A science and technology center and museum. <https://www.discovery-world.org/> *Admission* \$14-\$20.

What? HARLEY-DAVIDSON MUSEUM *When?* Daily 10am-5pm. *Where?* 400 W. Canal St. *Description* Exhibits on the history of the Harley-Davidson motorcycle. <https://www.harley-davidson.com/us/en/museum.html> *Admission* \$8-\$22 (4 or under are free).

SPECTATOR SPORTS

What? MARQUETTE WOMEN'S BASKETBALL *When?* Dec. thru late Feb. (regular season). *Where?* Al McGuire Center, 770 N. 12th St. *Description* Marquette University women's basketball games *Admission* Some tickets \$5 to \$10.

What? MARQUETTE GOLDEN EAGLES GAMES *When?* Dec. thru late Feb. (regular season). *Where?* Fiserv Forum *Description* Marquette University men's basketball games. *Admission* Some tickets at \$5 to \$11.

GET-MOVING ACTIVITIES

What? HANK AARON STATE TRAIL *When?* Daily. *Where?* Multiple access points; see map on website *Description* Opportunity to enjoy natural and urban views and walk or bike trail across Milwaukee, from the lakefront to 94th Place. <http://hankaaronstatetrail.org/> *Admission* Free.

What? OPEN SWIM—PULASKI *When?* Mon.- Thu., 1-4:45pm; Fri.-Sun. 1-5pm, holiday times vary. *Where?* Pulaski Park, 2701 S. 16th St. *Description* Open swim year-round at Pulaski indoor pool with diving boards, locker rooms, vending machines. <https://county.milwaukee.gov/EN/Parks/Explore/Water-Parks--Pools/Swimming-Pools/Pulaski-Pool> *Admission* \$4 adults and seniors, \$3 kids 3-11.

What? OPEN SWIM—NOYES *When?* Daily, 1-5pm, holiday times vary *Where?* Noyes Park, 8235 W. Good Hope Rd. *Description* Open swim year-round at indoor pool with diving boards, locker rooms, vending machines. <https://county.milwaukee.gov/EN/Parks/Explore/Water-Parks--Pools/Swimming-Pools/Noyes> *Admission* \$4, \$3 kids 3-11.

What? FREE FAMILY SWIM—GAENSLER HS *When?* Jan. 22-Mar. 11, Wed.'s 6:45-8.15pm *Where?* Gaensler Elementary,

Continued on Page 5

Happening in the
Menomonee River
Valley
neighborhood



Hank Aaron
State Trail

Access in the Valley and elsewhere.
Travel from the lakefront to 94th Place

ACTIVITIES IN MILWAUKEE NEIGHBORHOODS

Continued from Page 4

1250 E. Burleigh St. *Description* Indoor swimming with swim caps available for purchase (children 7 and under must be accompanied by adult). <https://milwaukeeerecreation.net/rec/Programs/Aquatics/Free-Open-Swim.htm> *Admission* Free.

What? SLEDDING--WILSON PARK *When?* Winter, daytime. *Where?* Wilson Recreation, 4001 S. 20th St. *Description* Sledding hills for family and friends. <http://county.milwaukee.gov/Sledding> *Admission* Free.

What? FREE FAMILY SWIM—MACDOWELL MONTESORRI *When?* Jan. 18-Mar. 7, Wed.'s 3:15-4:15pm. *Where?* 5225 W. Vliet St. *Description* Indoor swimming with swim caps available for purchase (children 7 and under must be accompanied by adult). <https://milwaukeeerecreation.net/rec/Programs/Aquatics/Free-Open-Swim.htm> *Admission* Free.

What? SLEDDING--PULASKI *When?* Winter months, daytime, lighted evenings 4:30-8:30pm. *Where?* Pulaski Park, 2701 S. 16th St. *Description* Sledding day or night on lighted hill. <http://county.milwaukee.gov/Sledding> *Admission* Free.

What? SLEDDING--MCCARTY *When?* Winter, daytime. *Where?* McCarty Park, 8214 W. Cleveland Ave. *Description* Sledding hills for family and friends. <http://county.milwaukee.gov/Sledding> *Admission* Free.

What? SLEDDING--MCGOVERN *When?* Winter, daytime. *Where?* McGovern Park, 5400 N. 51st St. *Description* Sledding hills for family and friends. <http://county.milwaukee.gov/Sledding> *Admission* Free.

What? OUTDOOR ICE SKATING—BAY VIEW *When?* Winter, only when ice is 6 inches thick; 3-8pm. *Where?* Humboldt Park, 3000 S Howell Ave. *Description* Ice skating for adults and children (heed "thin ice" signs). <http://www.humboldtparkmilwaukee.org/park-amenities/ice-skating/> *Admission* Free.

What? OUTDOOR ICE SKATING—DOWNTOWN *When?* Winter. *Where?* Red Arrow Park, 920 N Water St. *Description* Ice skating for adults and children. <https://county.milwaukee.gov/EN/Parks/Explore/Slice-of-Ice> *Admission* Free, but charge for skate rentals.

What? INDOOR SKATING *When?* Dec., weekdays 12:30-3:30pm. *Where?* Wilson Park Arena, 4001 S. 20th St. *Description* Indoor skating. <https://county.milwaukee.gov/EN/Parks/Explore/Community-Centers/Wilson-Ice-Arena> *Admission* \$6, \$4 juniors and seniors, \$3.50 youth; skate rentals extra.

What? SLEDDING—INDIGENOUS PEOPLES PARK *When?* Winter, daytime. *Where?* 7301 W. Courtland Ave. *Description* Accessible sledding hills for family, groups, and friends. <https://www.jsonline.com/story/life/wisconsin-family/2019/10/28/winter-2019-sledding-hills-milwaukee/2454041001/> *Admission* Free.

Continued on Page 6

Happening in the
Wilson Park
neighborhood



Wilson Park
Slopes

4001 S. 20th St.

Sledding hills for
family and friends

ACTIVITIES IN MILWAUKEE NEIGHBORHOODS

Continued from Page 5

What? SLEDDING—BROWN DEER PARK *When?* Winter, daytime. *Where?* 7835 N. Green Bay Rd. *Description* Sledding hills for family and friends. <https://www.jsonline.com/story/life/wisconsin-family/2019/10/28/winter-2019-sledding-hills-milwaukee/2454041001/> *Admission* Free.

What? NIGHTTIME SLEDDING--HUMBOLDT *When?* Winter, 3:30-8:30pm. *Where?* 3000 S. Howell Ave. *Description* Sledding hills for family & friends. <https://www.jsonline.com/story/life/wisconsin-family/2019/10/28/winter-2019-sledding-hills-milwaukee/2454041001/> *Admission* Free.

What? SLEDDING—MCGOVERN PARK *When?* Winter, daytime. *Where?* 5400 N. 51st Blvd. *Description* Sledding hills for family and friends. <https://www.jsonline.com/story/life/wisconsin-family/2019/10/28/winter-2019-sledding-hills-milwaukee/2454041001/> *Admission* Free.

What? SLEDDING—HUMBOLDT PARK *When?* Winter, daytime. *Where?* 3000 S. Howell Ave. *Description* Sledding hills for family and friends. <https://www.jsonline.com/story/life/wisconsin-family/2019/10/28/winter-2019-sledding-hills-milwaukee/2454041001/> *Admission* Free.

What? WATERSTONE BANK ICE RINK *When?* Opens mid Jan., sunrise-9pm. *Where?* Center St. Park 6420 W. Clarke St. *Description* Ice skating with warming house and free skate lending available at limited hours. See <https://www.society19.com/milwaukeees-best-places-to-go-for-ice-skating/> *Admission* Free.

What? RUN/WALK TRACK AT THE PETTIT *When?* Winter, hours vary, see website. *Where?* Pettit National Ice Center, 500 S. 84th St *Description* Walk or run on 430-meter track with lockers and showers for \$1 extra at limited times. <http://thepettit.com/sports/run-walk-track/> *Admission* \$4 day pass.

What? PUBLIC ICE SKATING AT THE PETTIT *When?* Winter, hours vary, see website. *Where?* Pettit National Ice Center, 500 S. 84th St. *Description* Indoor ice skating and skate rentals. <http://thepettit.com/public-skate/> *Admission* \$7.50, \$6.50 kids 13-15; \$5.50 kids 4-12 and seniors; free <4.

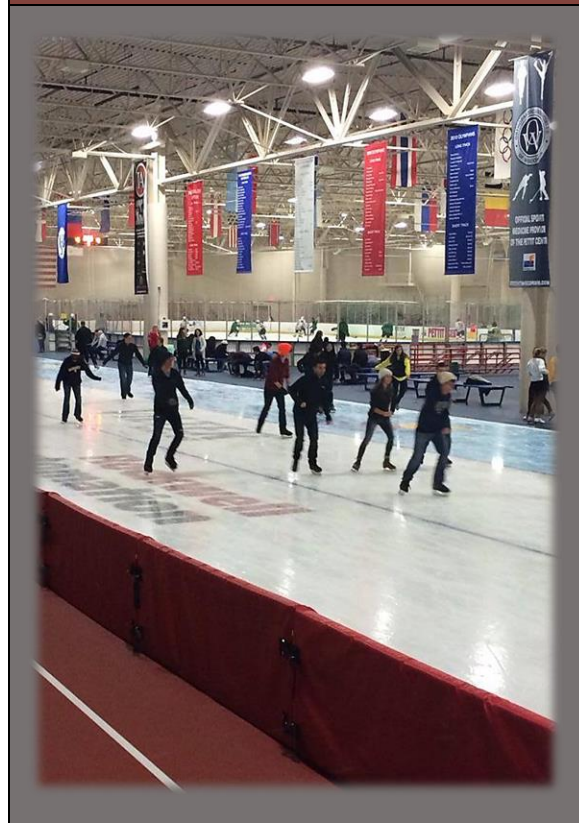
What? MERRILL PARK PLAYFIELD/COMMUNITY CENTER *When?* Daily 10am-7pm. *Where?* 461 N. 35th St. *Description* Arts and crafts, computer lab, board games, video games, movie night, and foosball. http://www.neighborhoodlink.com/Merrill_Park/pages/223713 *Admission* Free.

ARTS, THEATRE, AND CRAFTS

What? THE WAREHOUSE *When?* Daily, 10am-4pm. *Where?* 1635 W. St. Paul Ave. *Description* Secret Garden exhibit opening Feb. 18 (“Embrace your inner child and step into the wonders of spring.”) <http://wpcamilwaukee.org/> *Admission* Free.

Continued on Page 7

Happening in the
Fair Park
neighborhood



Public ice skating
at the Pettit

500 W. 84th Street

ACTIVITIES IN MILWAUKEE NEIGHBORHOODS

Continued from Page 6

What? WALKER'S POINT CENTER FOR THE ARTS *When?* Tue.-Sat. 12-5pm. *Where?* 839 S 5th St. *Description* Ongoing exhibitions in a community setting. <http://wpca-milwaukee.org/> *Admission* Free to look.

What? ART BAR *When?* Daily 3pm-12am. *Where?* 722 E. Burleigh St. *Description* Permanent and temporary art exhibits. <https://www.facebook.com/artbarmke/> *Admission* Adults, free to look.

What? GALLERY AT MILWAUKEE INSTITUTE OF ART & DESIGN *When?* Mon.-Sat. 10am-5pm. *Where?* 273 E. Erie St *Description* Rotating exhibitions of renowned artists, MIAD students, and MIAD faculty. <http://www.miad.edu/> *Admission* Free.

What? GALLERY 218 *When?* Sat. 12-5pm. *Where?* 207 East Buffalo St. Suite 218. *Description* The cooperative gallery of the Walker's Point Artists Assoc., Inc. <https://gallery218.com/> *Admission* Free, donations welcome.

What? JAZZ GALLERY FOR THE ARTS *When?* Sat. 12-5pm. *Where?* 926 E Center St. *Description* New exhibits every other month. <https://riverwestart.org/> *Admission* Free.

What? VAR WEST GALLERY *When?* Thu thru Sat. 11am-4pm. *Where?* 423 W Pierce St. *Description* Focusing on exhibiting solo shows for emerging and established artists, including full bar for purchases during events. <https://www.varwestgallery.com/about> *Admission* Free to look.

What? TERRY MCCORMICK CONTEMPORARY FINE AND FOLK ART GALLERY *When?* Call (414) 264-6766 to visit. *Where?* 2522 N. 18th St. *Description* Contemporary art by the founder, Evelyn Patricia Terry, along with several friends whose work she exhibits. <https://www.facebook.com/terrymccormick-gallery/> *Admission* Free to look.

ECO/NATURE ACTIVITIES

What? EARLY MORNING BIRDWALK—MENOMONEE VALLEY *When?* Most Tue.'s. 8-10am. *Where?* Menomonee Valley, 3700 W. Pierce St. *Description* A walk for bird watchers of all levels to explore Three Bridges Park for birds. <http://urbanecologycenter.org/programs-events-main.html> *Admission* Free.

What? EARLY MORNING BIRDWALK—WASHINGTON *When?* Most Wed.'s. 8-10am. *Where?* Washington Park, 1859 N. 40th St. *Description* A walk for bird watchers of all ability levels to walk through different habitats for birds. <http://urbanecologycenter.org/programs-events-main.html> *Admission* Free.

What? EARLY MORNING BIRDWALK—RIVERSIDE *When?* Most Thu.'s. 8-10am. *Where?* Riverside Park, 1500 E. Park Pl. *Description* A walk for bird watchers of all ability levels to explore different habitats for birds and other animals. <http://urbanecologycenter.org/programs-events-main.html> *Admission* Free.

Continued on Page 8

Happening in the
Washington Park
neighborhood



Early morning
birdwalk

Washington Park
1859 N. 40th Street

ACTIVITIES IN MILWAUKEE NEIGHBORHOODS

Continued from Page 7

FOR THE KIDS

What? MERRILL PARK PLAYFIELD/COMMUNITY CENTER
When? Weekdays 10am-7pm. *Where?* 461 N. 35th St. *Description* Arts and crafts, computer lab, board games, video games, movie night, and foosball. http://www.neighborhood-link.com/Merrill_Park/pages/223713 *Admission* Free.

What? STORYTIME AT VIRTUAL *When?* Feb. 2, Wed. 10:30-11am. *Where?* Register at https://us06web.zoom.us/webinar/register/WN_dBhwbWhYSy-h7g1OD7k5IQ *Description* Young children and their caregivers are invited for fun stories, songs, and fingerplays all designed to help little ones develop important literacy skills needed prior to learning how to read. <http://www.mpl.org/services/events/> *Admission* Free.

What? PRE-VALENTINES DAY BAKING CLASS FOR KIDS
When? Sat., Sun., Feb. 5, 6, 12-2pm. *Where?* 944 N. 33rd St. *Description* Cake decorating for kids 5 and up. [Kids Pre-Valentines Decorating Class, 944 N 33rd St, Milwaukee, February 5 to February 6 | AllEvents.in](https://www.all-events.in.com/Events/Pre-Valentines-Decorating-Class-944-N-33rd-St-Milwaukee-February-5-to-February-6-AllEvents.in) *Admission* Unk, must purchase tickets at website.

What? SHAMROCK AND RAINBOWS MINI-CAMPS (AGE 3-6)
When? Sat., Mar. 12 9:30-11:30am. *Where?* Bay View Community Center, 1320 E Oklahoma Ave, *Description* Celebrate St. Patrick's Day and everything shamrocks and rainbows by engaging in sensory activities, arts/crafts, and movement activities Shamrocks and Rainbows Mini-Camp! (Ages 3-6), Bay View Community Center, Milwaukee, March 12 2022 | [AllEvents.in](https://www.all-events.in.com/Events/Shamrocks-and-Rainbows-Mini-Camp-1320-E-Oklahoma-Ave-Bay-View-Community-Center-Milwaukee-March-12-2022-AllEvents.in) *Admission* Unk., purchase tickets at website.

FOOD AND FARMERS' MARKETS

What? MILWAUKEE COUNTY WINTER FARMERS MARKET
When? Sat.'s 8am-11:30am. *Where?* Deer District, 333 W. Juneau Ave. *Description* Fresh produce, meat, eggs, dairy from Wisconsin small farms. <http://www.mcwfm.org> *Admission* Free.

ENRICHMENT ACTIVITIES

What? SCALE OF THE UNIVERSE *When?* Feb., Fri.'s 7-8pm & 8-9 pm. *Where* Manfred Olson Planetarium, UW-M Physics building, 1900 E. Kenwood Blvd. *Description* Chance to explore other galaxies (over 170 million in existence). Explore shapes, collisions, and black holes, and more. <http://uwm.edu/planetarium/shows/special-events/> *Admission* \$6, purchase online.

What? ROOFTOP STARGAZING *When?* Feb. 11, Fri. 9-10pm. *Where* Manfred Olson Planetarium, UW-M Physics building, 1900 E. Kenwood Blvd. *Description* Gaze at stars and planets through telescopes. <http://uwm.edu/planetarium/shows/special-events/> *Admission* Free.

Continued on Page 9

Happening in the
Bay View
neighborhood



Shamrock &
rainbows mini-
camp

Bay View Community
Center

1320 E. Oklahoma Ave.

ACTIVITIES IN MILWAUKEE NEIGHBORHOODS

Continued from Page 8

FAMILY/CHILDRENS' ACTIVITIES

What? FAMILY FREE DAY AT THE ZOO *When?* Feb. 5, Mar. 5, Sat.'s 9:30am-4:30pm. *Where?* Milwaukee County Zoo, 10001 W. Bluemound Rd. *Description* If you want to stay warm, the zoo has many indoor animal exhibits for your enjoyment; if you're more of the outdoorsy type, you'll also find many outdoor animal exhibits. <http://www.milwaukeezoo.org/events/> *Admission* Free on days specified.

What? WINTER WARM UP 5K/10K *When?* Feb. 27, Sun. 9am. *Where?* Hart Park, 7300 W. Chestnut St. *Description* Race along the wonderful Oak Leaf Trail. <https://county.milwaukee.gov/EN/Parks/Experience/Events-Calendar> *Admission* Free.

What? FRIDAY NIGHT TALES FOR TOTS *When?* Fri., Feb 18 6:00-7:30 pm. *Where?* Hawthorn Glen Outdoor Education Center, 1130 N 60th St. *Description* "Stranger in the Woods" by Carl R Sams II and Jean Stoick. Friday Night Tales for Tots, Hawthorn Glen Outdoor Education Center, Milwaukee, February 18 2022 | AllEvents.in *Admission* \$5-\$8, purchase tickets online.

What? BARRIO TRAIN AT MITCHELL PARK DOMES *When?* Make reservation at website. *Where?* 524 S. Layton Blvd. *Description* A place to learn about history of Latino migration to city's South Side. <http://county.milwaukee.gov/MitchellParkConserva10116.htm> *Admission* Free to \$8.

What? WINTERFEST AT WASHINGTON PARK *When?* Sat., Feb. 12 10am-2pm. *Where?* Urban Ecology Center, Washington Park, 1859 N 40th St. *Description* Participants will be able to ski through the park, go on a snowshoeing adventure, snow paint and more. Winterfest at Washington Park, Urban Ecology Center, Washington Park (Milwaukee), February 12 2022 | AllEvents.in *Admission* Assumed free, but check website.

Jane Jacobs on neighborhood walkways

The sidewalk must have users on it fairly continuously, both to add to the number of effective eyes on the street and to induce the people in buildings along the street to watch the sidewalks in sufficient numbers. Nobody enjoys sitting on a stoop or looking out a window at an empty street.

From *The Death and Life of Great American Cities*.

Happening in the
Zoo
neighborhood



Free days at
Milwaukee
County Zoo

February 5
March 5

10001 W. Bluemound Road

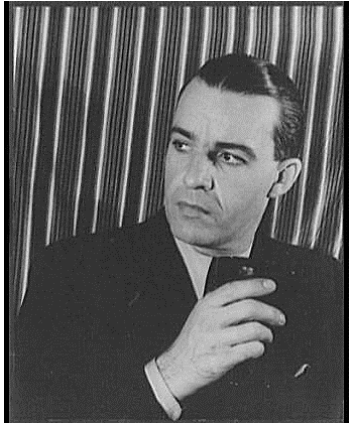
TV/FILM STARS IN MILWAUKEE NEIGHBORHOODS

Continued from Page 1

In the Yankee Hill neighborhood

John McGivern (1954-) is an actor and writer, known for playing Bruce McIntosh in *The Princess Diaries* and serving as the host of *Around the Corner with John McGivern*, a Milwaukee PBS series. He currently lives in a condominium in the Yankee Hill neighborhood. McGivern received an Emmy in 2010 for Outstanding Achievement for Individual Excellence on Camera: Programming - Performer in the Chicago/Midwest region.

In the Marquette neighborhood



Alfred David Lunt (1892-1977) was an American actor and director. He was born on Grand Avenue (today's Wisconsin Avenue), the son of Alfred David Lunt and Harriet Washburn (nee Briggs) Lunt. Alfred was best known for his long stage partnership with his wife, Lynn Fontanne, where they co-starred in Broadway and West End productions. Although they appeared in classics including *Pygmalion*, *The Taming of the Shrew*, and *The Seagull*, they were best known for their performances in light comedies by Noël Coward, Terence Rattigan, and S. N. Behrman.

In the Fernwood neighborhood

Anthony Crivello (1955-) is an American singer and actor. He has performed in the original cast of a number of Broadway shows, including *Les Misérables*, *Golden Boy*, *Kiss of the Spider Woman*, *Marie Christine*, and *The News*. In 1993, he won the Tony Award for Best Featured Actor in a Musical for his performance as Valentin in *Kiss of the Spider Woman*. Crivello was born in Milwaukee, the son of Josephine (née Mussomeli) and Vincent J. Crivello. He graduated from Saint Thomas More High School in the Fernwood neighborhood in 1973 and was inducted into the Alumni Hall of Fame in 1995. He attended Marquette University.

In the Merrill Park and Story Hill neighborhoods



Spencer Bonaventure Tracy (1900-1967) was one of the major stars of Hollywood's Golden Age. He was born in the Merrill Park neighborhood where he attended St. Rose Parish. He and his family later moved to the city's Story Hill neighborhood. Tracy was the first actor to win two consecutive Academy Awards for Best Actor.

By Albert Domasin from Los Angeles, united states - DOOL @ MTR 6, CC BY 2.0, <https://commons.wikimedia.org/w/index.php?curid=2766599>

In the Sherman Park neighborhood

Thomas Robert Laughlin Jr. (1931-2013) was an American actor, author, director, and screenwriter who grew up on N. 38th Street in the Sherman Park area. He went to Washington High School. He was best known for his series of *Billy Jack* films. Laughlin's unique promotion of *The Trial of Billy Jack* (TV

trailers during national news) had a major influence on the way films are marketed.

In the King Park neighborhood

Born Benjamin Greenberg (1893-1974), Ben Bard was an American movie actor, stage actor, and acting teacher. He grew up in a Jewish family on Milwaukee's North Side. With comedian Jack Pearl, Bard also worked in a comedy duo in vaudeville. Although Bard was recruited to be a leading man at Fox Film Corporation, he tended to be typecast as a smooth-talking villain with a decidedly dark side. One example was his portrayal of "Mr. Brun" in *The Seventh Victim* (1943).

In the Midtown neighborhood



John C. Becher (1915-1986) was an American stage and television actor. He was born on Milwaukee's Chestnut Street (now Juneau) to Hungarian immigrant parents, John and Catherina Becher. The family moved northwest to Granville on Milwaukee's border by the time John turned 15. John earned a bachelor's degree in 1938 from Milwaukee

State Teachers College and a Bachelor of Fine Arts degree three years later from the Goodman School of Drama in Chicago. He made his professional debut in 1946 at the McCarter of Princeton.

By Unknown - Original publication: December 22, 1956Immediate source: <https://www.imdb.com/name/nm0064980/mediaviewer/rm2156964353/>, Fair use, <https://en.wikipedia.org/w/index.php?curid=68909460>

Continued on Page 11

Ten-part series continues on celebrities that lived in Milwaukee neighborhoods

Have you ever wondered who might have lived in your Milwaukee neighborhood? For ten issues, *Milwaukee Neighborhood Forum* features nationally recognized celebrities that once resided on our city's blocks.

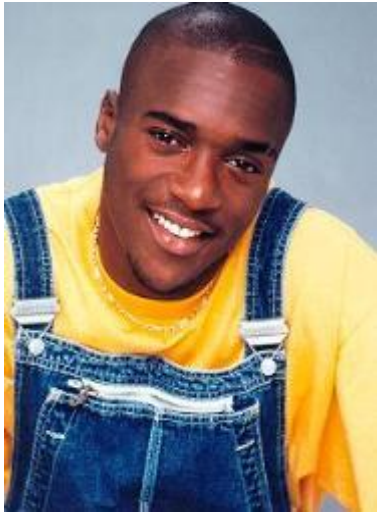
The order follows:

- (1) Political/Activist leaders (December issue),
- (2) Military leaders (February issue),
- (3) Writers/Journalists (April issue),
- (4) Religious leaders (June issue),
- (5) Scientists (August issue),
- (6) Artists (October issue),
- (7) Musicians (December issue),
- (8) TV/Film stars (this issue),
- (9) Sports heroes, and
- (10) Corporate leaders.

TV/FILM STARS IN MILWAUKEE NEIGHBORHOODS

Continued from Page 11

In the Wyrick Park neighborhood



Artimus Lamont Gardison Bentley (1973-2005) was an American rapper and actor who was known for his role as Hakeem Campbell on the sitcom *Moesha* and its spin-off *The Parkers*. Bentley also played Crazy K in the 1995 horror film *Tales from the Hood* and C-Money in the 2001 film *The Wash* (also featuring Dr. Dre and Snoop Dogg). Bentley, child of Loyce Bentley and Donald L. Gardison, was educated on Milwaukee's far Northwest Side at Webster Middle School. He later moved to Los Angeles with Loyce, who was pursuing a career as a professional singer. His friends called him "Cuz" and "My Guy." Gardison Bentley died young in a freeway crash.

By <http://www.thuglifearmy.com/images/News%20Pics/t.250.lb.jpg>, Fair use, <https://en.wikipedia.org/w/index.php?curid=3857085>

In the Merrill Park neighborhood

Jeffrey Doucette (1947-) is an American character actor who grew up in Milwaukee, the son of Elizabeth (Betty Andres) and William (Bill) Doucette. He attended Marquette University High School in the Merrill Park neighborhood. He later attended Lewis University in Romeoville, Illinois, where he helped build the theater and theater program. He graduated from Northern Illinois University. In Chicago Doucette joined the Second City Touring Company, where he met his future comedy partner, Ernst Emling, and formed the comedy duo Jeff and Ernst. The duo toured the country with folk singer Bob Gibson, and opened for major acts such as Barry Manilow and The Spinners

Martin Drive: One of the city's most diverse and established neighborhoods

Much of the small Martin Drive neighborhood was developed in the 1920s. Unlike the elite areas on nearby Highland Boulevard, this area became a working-class neighborhood. Workers living in Martin Drive had several large employers nearby, including Harley Davidson, Miller Brewery, and the Transport Company. Other industrial employers were just a few blocks away in the Menomonee Valley.

Bordered by the sprawling Washington Park to the north, residents had quick access to picnic areas, programs, and the county's zoo. Many could stop to observe all the outdoor animals on their way to work or school. Much changed during the era of freeway building, when I-41 cut into Washington Park and the zoo was relocated to the far west side of Milwaukee. Many homes were also lost on 47th Street between Vliet Street and Juneau Avenue. The neighborhood became even smaller, but did not lose its cohesiveness.

Early populations

The early population of Martin Drive was almost totally German. Many had moved from older blocks in the central city to this west side neighborhood as an "upgrade." A large number of duplexes were built to house several generations of each property owner. The early German cultural influence is still present in the Blatz Temple of Music and statues of Goethe and Schiller in Washington Park and the nearby statue of Von Steuben (see below).



By the early to mid-20th century, several Greek families also settled in the Martin Drive neighborhood. They founded a chapter of the American Hellenic Educational Progressive Association (AHEPA) and a Greek ladies' club in the neighborhood.

Vliet Street

Vliet Street quickly became a significant commercial corridor for Martin Drive. And the street attracted shopkeepers who were relatively diverse. Included among the proprietors were Germans, Irish, Austrians, Jews, Hungarians, Croatians, Poles, Czechs, Italians, Scots, Russians, and Chinese (see next page).

Continued on Page 12

Martin Drive merchant profile (1930s)

Joe C. Chong

In 1933, Joe C. Chong operated the Oriental Food Restaurant at 3907 W. Vliet. Records suggest that he originally lived in California and migrated to Chicago where he and a younger brother operated a "Chop Suey" business.

Chinese immigration to the U.S. began in the 1850s. The Chinese were searching for ways to escape problems associated with the Opium Wars that left China under European domination. Many Chinese were initially drawn to California because of the discovery of gold in 1848. Like the Europeans, they were very interested in wealth. But by the time they arrived, there were slim pickings. As a result, most of the Chinese looked for other ways to earn money. Some returned home and others ended up as permanent residents on the West Coast.

Chinese men tended to come alone to the United States for several reasons. First, it was cheaper. Second, some immigrated to America with the idea that they could "strike it rich" and then return home. Third, China had cultural norms against women traveling abroad. Because so few "struck it rich," many men ended up becoming permanent settlers, but laws and economic circumstances would restrict them from sending home for their wives. In addition to the problems the Chinese faced in sending for their wives, local laws prohibited intermarriage between Chinese and European Americans. The absence of women among the Chinese Americans resulted in bachelor societies where the ratio of males to females was approximately 17 to 1.

The Chinese were the first ethnic group singled out for immigration exclusion. On the year that Joe Chong was born, the Chinese Act of 1882 was passed, barring further immigration of Chinese laborers and excluded wives of Chinese who were United States citizens.

Joe Chong remained in Milwaukee until at least the late 1950s when he likely died. It is not clear how long he ran the restaurant at that location.

"Martin Drive changed. I know you will ask about the freeway. There were houses behind us and there was the zoo. You could walk down 46th and cross Vliet and you were on the zoo grounds. The building closed but the zoo was always open because of the park. We could hear the lions roar if the wind was coming from the right direction. I remember Samson and Sambo when they were babies and the lady caring for them was in the cage dressed as a nurse."

"Things to do with the zoo is my recollection. When the old elephant passed, we got two new elephants. There was a parade up Vliet Street. There used to be trolley cars and they would come off of 37th and Vliet. We were here at the end of World War II. And there was the big to-do about the freeway. My grandfather didn't know if our house would remain or what would happen if the plan was finalized."

"When they put in the freeway, I wasn't here but that divided the neighborhood and it changed the face of the park because it cut right through the neighborhood because there's also a Martin Drive on the other side of the freeway behind MPS, and that's also Martin Drive, so that kind of cut off the whole neighborhood, and it cut out a significant part of the park. So, what makes a park safe is that there's houses all around it, so that west side of Washington Park is up against the freeway, so there is more of the criminal activity that occurs because there's no houses to see what's going on. So, I think the freeway had a major impact on many neighborhoods, but this one too. Now I like living so close to the freeway, because I like jumping on and off and going where I need to go because of my work, you know?"

About now:



"What's really been nice recently is the Washington Park and the revitalization of the park and Urban Ecology being there and the art walks and farmers market. And there seems to be more things that keep coming up on Vliet Street. There's more activity."

Current populations

An oral history project of Martin Drive conducted by Urban Anthropology Inc. in 2010 found a very diverse current population in the neighborhood. Included among the ethnic groups were African Americans (comprising approximately half the population), Hmong, Latinos, Irish, American Indians, Germans, Scots, Swedes, Bohemians, Welsh, English, Poles, Danes, Greeks, Asian Indians, and Italians. The various groups form a very active neighborhood association where they discuss their commonalities, differences, and needs.

The neighborhood is economically diverse with approximately three-quarters of the residents living in households with annual incomes between \$25,000 and \$50,000 and the remainder living in households of incomes over \$50,001 (some over \$150,000).

Home ownership is a buy in the lovely Martin Drive neighborhood with select monthly costs (including mortgages, taxes, insurance, deeds of trust, contract to purchase, and more) of almost two-thirds of the properties going for under \$1,500. Rents are also a buy, with over three-quarters of the rental units going for \$500 to \$1,000.

Oral history quotes

Residents who participated in the oral history discussed the Martin Drive they knew in their youth and the Martin Drive they currently knew. *About then:*

Continued on Page 13

MARTIN DRIVE NEIGHBORHOOD

Continued from Page 12

“There are a fair amount of singles. There is a surge of families as of late or people planning to raise families. The people who moved here years ago probably did because they got a steal on a home and then stayed forever. Most people get here and stay.”

“When we were doing the survey, we were kind of amazed at the kids there were in the neighborhood that we didn’t know about because mom and dad didn’t let them play outside. But they were off to church activities, after-school activities, a lot of after-school activities, you know, like the CCC and tutoring, music lessons, going to see grandma, of course.”



Harley Davidson plant



Duplexes tucked away at 43rd & Martin Drive



Shops at 43rd & Vliet Streets

“I think the neighborhood association has really helped to get people a place to gripe where something might actually get done instead of just bitching--constructive griping, pointing out problems. It might be the best in the city. And there were walks for a while and we had some patrols and people would meet at a house and we would all just walk through the neighborhood together, just to be seen.”

“There have been youth things specifically for youth--a basketball thing--and they did that thing down at the school garden and all kids were invited to help out with that and learn how to grow things. We have a Halloween trick or treat night. It gets the neighborhood together. We had a neighborhood picnic and we have had clean ups--just again, generally to get everybody doing something together--adults or kids.”



Tree-lined streets at 43rd & Martin Drive

INTERESTING FEATURES

- **Harley Davidson Motor Company** (3700 W. Juneau Avenue). See photo.
- **Artists Working in Education (A.W.E.)** (4311-4315 W. Vliet Street), providing youth with arts enrichments programs that advance learning and cultivate community. See photo on Vliet.
- **Martin Drive Neighborhood Association**, bringing together diverse groups to maintain and improve the neighborhood

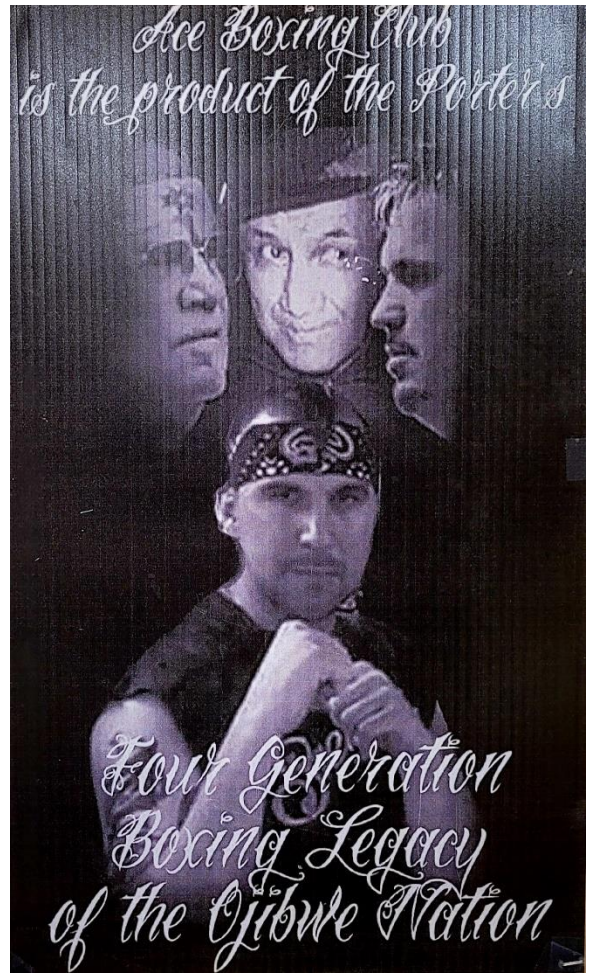
Process afoot to get new roof for Ace Boxing and the Del Porter Pavilion in the Lincoln Village neighborhood



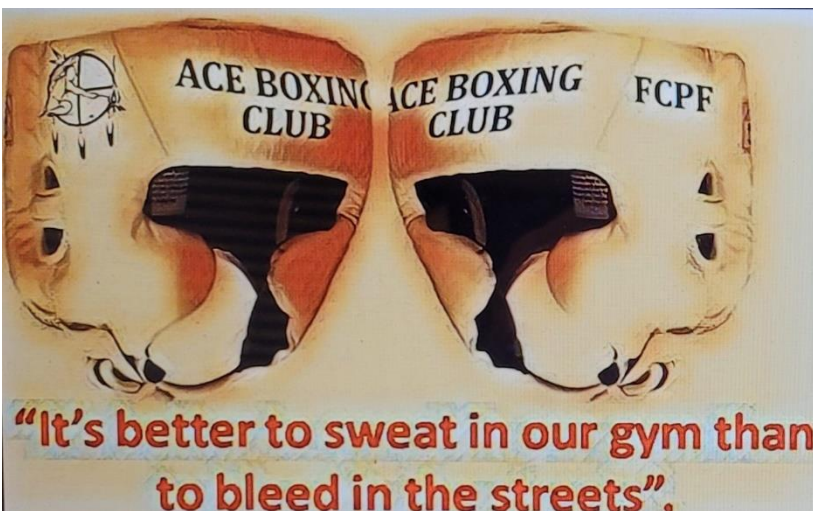
Since 1960, the Ace Boxing Club has served the city's southside youth and their families. This achievement been due to the dedication of an Ojibwe family, the Porters, who have operated the club for its duration without ever requesting a salary.

For most of these years, the club has run out of a once-vacant pavilion in Kosciuszko Park on Lincoln Avenue. Ace Boxing's founder was Del Porter, and in 2007, the Milwaukee County Board voted to rename the building the Del Porter Pavilion in honor of his work and the contributions of Wisconsin Indians to Milwaukee. Del died the following year, and since then the club has been operated by his son, Frank Porter.

But the pavilion has seen better days. The roof leaks and is in need of major rehab. However, just months ago, the County Board voted to include roof repairs for the Del Porter pavilion in its budget. The measure is currently awaiting the signature of the county executive and, following this, a timeline for repairs will be set by the Parks Department.

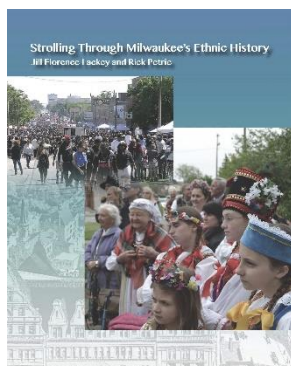


See more on Ace Boxing in the April issue of Milwaukee Neighborhood Forum



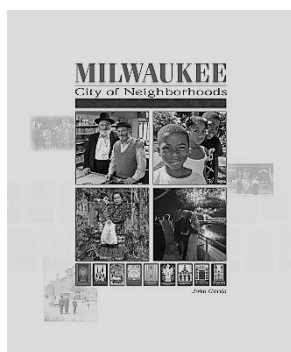


Books on Milwaukee Neighborhoods



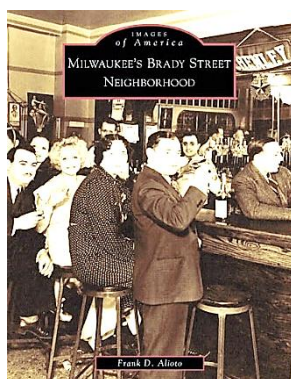
Strolling through Milwaukee's Ethnic History By Jill Florence Lackey and Rick Petrie

This latest work provides an "up close and personal" look at local ethnic life by directing readers to the neighborhoods and venues where the groups left their marks. It brings readers directly into their experiences, whether it involves strolling through the neighborhoods they built or participating in contemporary ethnic activities. "Strolling . . . is an intriguing guide to the ethnic history in our midst and a colorful reminder that Milwaukee has always been a city of newcomers." - John Gurda. <http://mecahmilwaukee.com>



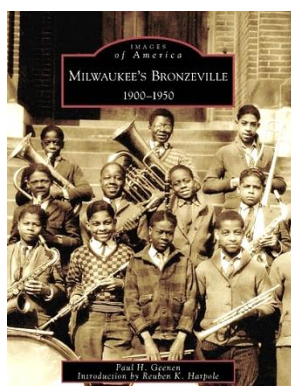
Milwaukee, City of Neighborhoods By John Gurda

Milwaukee: City of Neighborhoods is the most comprehensive account of grassroots Milwaukee ever published. Richly illustrated, engagingly written, and organized for maximum ease of use, the book is a fine-grained introduction to the Milwaukee community, and its communities, that will endure as a standard work for years to come. <https://historicmilwaukee.org/milwaukee-city-of-neighborhoods/>.



Milwaukee's Brady Street Neighborhood By Frank D. Alioto

Milwaukee's Brady Street neighborhood began in the mid-19th century as a crossroads between middle-class Yankees from the east and early German settlers. Polish and Italian immigrants soon followed, working the mills, tanneries, and brewers that lined the riverbank. The hippies arrived in the 1960s. By the 1980s the area fell into blight, neglect and decay. Now, a true model for new urbanism, the Brady Street neighborhood is the midst of a renaissance. <https://www.arcadiapublishing.com/Products/9780738551746>



Milwaukee's Bronzeville: 1900-1950 By Paul H. Geenen, Introduction by Rueben Harpole

With the migration of African American sharecroppers to northern cities in the first half of the 20th century, the African American population of Milwaukee grew from fewer than 1,000 in 1900 to nearly 22,000 by 1950. Most settled along Walnut Street, an area that came to be known as Milwaukee's Bronzeville, a thriving residential, business, and entertainment community. Bronzeville is remembered by African American elders as a good place to grow up. <https://www.arcadiapublishing.com/Products/9780738540610>

The dramatic gift of one author

Mystery writer and Milwaukee native, Sienna Jacks, is creating a series of novels that take place in Milwaukee neighborhoods called "The Milwaukee Series." She is donating all of her royalties to Urban Anthropology's neighborhood exhibits' program.

The proceeds from *The House Off of Brady* (see following page) are currently being used to create all new exhibits at the Rozga Family's Old South Side Settlement Museum.

Mystery novels that are currently available or shall eventually be included in this series will take place in these Milwaukee neighborhoods:

- Brady Street
- Bronzeville/Brewer's Hill
- Lincoln Village
- Walker's Point
- Riverwest
- Granville

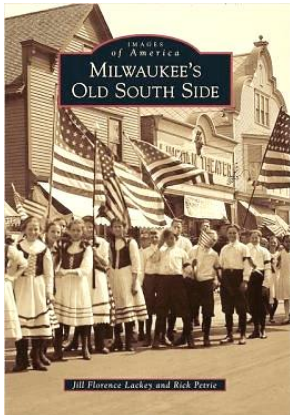
Currently, all of Sienna Jacks' novels have perfect five-star ratings from readers at Amazon.com

To enjoy wonderful reading and to contribute to neighborhood museums and exhibits, purchase the Jacks' books from the publisher at

<http://mecahmilwaukee.com/Fiction.html>

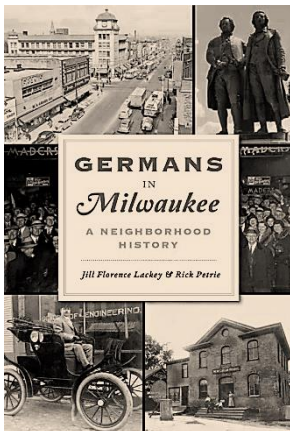


Books on Milwaukee Neighborhoods (Cont.)



Milwaukee's Old South Side
By Jill Florence Lackey and Rick Petrie

In the late 1800s, the Old South Side was developed by immigrant Poles, who became the dominant population for over 100 years. While other Milwaukee ethnic neighborhoods gradually dissipated in the mid-20th century because of assimilation pressures, freeway building, or urban renewal programs, the Old South Side remained solidly Polish. A survey nearly a half century later revealed that people of 110 national backgrounds now lived in the Old South Side, with the three largest groups being Mexicans, Poles, and American Indians. <https://www.arcadiapublishing.com/Products/9780738590691>

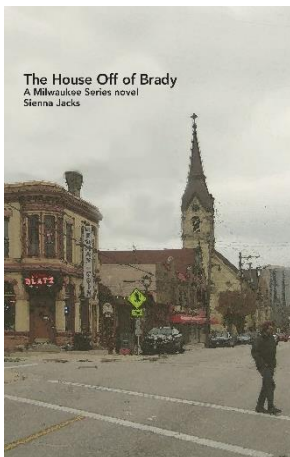


Germans in Milwaukee: A neighborhood history
By Jill Florence Lackey and Rick Petrie

Germans dominated Milwaukee like no other large American city. Their presence inhabits the city's neighborhoods, from its buildings and place names to its parklands and statuary. Their influence also lives in the memories shared by local residents. A small Milwaukee neighborhood south of Miller Valley was christened after a farmer's pigs, and a busboy turned beer baron built the famous Pabst Brewery in West Town. A ghost is said to haunt the old Blatz Brewing compound. And the remains of the early tanning industry can still be seen in Walker's Point. Compiling more than 1,200 interviews, authors Jill Florence Lackey and Rick Petrie share these ground-level perspectives of the lasting German influence on the Cream City. www.arcadiapublishing.com/Products/9781467147286

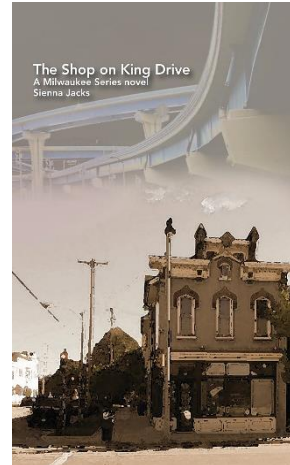
spectives of the lasting German influence on the Cream City. www.arcadiapublishing.com/Products/9781467147286

Fiction



The House Off of Brady A Milwaukee Series novel
By Sienna Jacks

Two young anthropologists, trying to convince a local nonprofit to sponsor a neighborhood house museum, must show that the historical occupants of the house were representative of Milwaukee's Brady Street, and that they project positive images for the neighborhood. Their efforts are boosted by a personal journal left behind by one of the home's occupants--Giuseppe Russo. But as the young anthropologists translate and transcribe the journal, they learn that Giuseppe had been banished from his former community in the Third Ward. Are they about to stumble on information that could kill the project—or something perhaps even worse? <http://mecahmilwaukee.com>



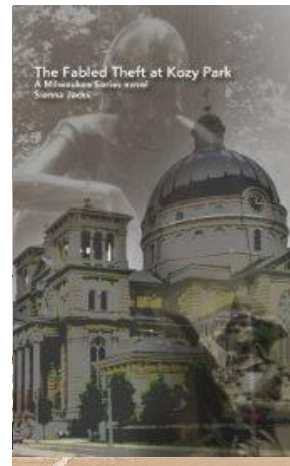
The Shop on King Drive A Milwaukee Series novel
By Sienna Jacks

A mystery arises out of the ruins of urban renewal. Two young anthropologists, conducting research that would illuminate one dark period in Milwaukee's central city history, confront painful but sometimes puzzling accounts. During the 1950s and 1960s, over 8,000 homes and an entire business district of the African American Bronzeville community were razed. While

interviewing survivors, the anthropologists note that the name of a particular attorney kept entering the conversation. The lawyer claimed to be helping the black community fight the removal, but his efforts had the opposite effect. Suspicions remained for over 50 years over who was behind the deception and why. <http://mecahmilwaukee.com>

The Fabled Theft at Kozy Park A Milwaukee Series novel
By Sienna Jacks

The anthropologists at City Anthropology were asked to use their research skills to look into a man's confession that might crack the longest unsolved mystery on Milwaukee's old South Side—the theft of the squirrel lady statue at Kozy Park. According to reports, the man Raf (now deceased) also implicated members of a local Polish club with an agenda of removing non-Polish influences from the neighborhood. Assigned to the project, Enid and Meyer are baffled by the information they are getting from those who witnessed the confession, little of which supports Raf's story. Further inquiry points to events surrounding Raf's stepson. Who really was he and why did he inexplicably appear on the scene all those years ago? Their quest for answers leads them to the club in question, but with unexpected results. The ultimate mystery they must solve is the true reason why Raf made this confession and steered them to a list of alleged conspirators. <http://mecahmilwaukee.com>



Assigned to the project, Enid and Meyer are baffled by the information they are getting from those who witnessed the confession, little of which supports Raf's story. Further inquiry points to events surrounding Raf's stepson. Who really was he and why did he inexplicably appear on the scene all those years ago? Their quest for answers leads them to the club in question, but with unexpected results. The ultimate mystery they must solve is the true reason why Raf made this confession and steered them to a list of alleged conspirators. <http://mecahmilwaukee.com>

ultimate mystery they must solve is the true reason why Raf made this confession and steered them to a list of alleged conspirators. <http://mecahmilwaukee.com>

Milwaukee Neighborhood Forum

Milwaukee Neighborhood Forum is published bimonthly by Urban Anthropology Inc. and is managed by volunteer anthropologists. The purpose of the newsletter is to offer neighborhood groups and individuals opportunities to share news and information about their neighborhoods. The newsletter does not receive funds from any external source. The editor is Dr. Jill Florence Lackey.

Subscriptions

The newsletter is emailed to anyone wishing to receive it. If you wish your email or that of a friend to be added to the subscriber list, send the email addresses to JFLanthropologist@currently.com and indicate the name of this publication.

Submitting events

Milwaukee Neighborhood Forum is interested in events from individuals, businesses, and organizations that have a neighborhood appeal. These can include block parties, church picnics, local music festivals, sports on the block, get-moving activities that take place outdoors, and art and theatre events involving neighborhoods. All event submissions should include a one-sentence description, date and time, location, and website or phone number for additional information. Photos may also be submitted.

Submitting stories/press releases on neighborhoods

In the spirit of Jane Jacobs, stories should always focus on assets of neighborhoods. They must be between 100 and 400 words. Some editing will be done to match our style guidelines and spatial constraints. We will write the stories for you if you simply send us a list of the information that you want included. A photo is always required.

Submission deadlines

Submit events or stories by the 25th of the month preceding publication. Publication dates are on the 1st day of June, August, October, December, February, and April. Please send your stories to Dr. Jill at JFLanthropologist@currently.com.

Now live . . .

Website on 191 Milwaukee neighborhoods

Links on each neighborhood include:

- *6 to 35 pages of information*
- *Brief neighborhood description*
- *Population-focused history (including ethnic roots)*
- *Snapshots of commercial districts of the past*
- *Quotes from residents*
- *Quotes from oral histories (where available)*
- *Low cost nearby outings for families*
- *Demographics of current neighborhood*
- *Photos of neighborhood*

The website currently includes ALL 191 of the neighborhoods, courtesy of Urban Anthropology Inc.

<http://neighborhoodsinmilwaukee.org/>