

MLS Listing January/February, 2012

THERE ARE ONLY 21 SINGLE FAMILY HOUSES LEFT FOR SALE IN THE PARK NEIGHBORHOODS: here are some

Here is a GREAT bargain in the Baran Park neighborhood!



434 W Harrison Ave

Milwaukee, WI 53207-1441

\$24,900

Status: Active

Sale Date:

Property Type: Single Family

Total Rooms: 5

Bedrooms: 2

Full Bathrooms: 1

Half Bathrooms: 0

Garage Size: 2.0

Garage Type: Alley Entrance, Electric Door Opener

Lot Size: Less than 1/4

Subdivision:

School District: Milwaukee

High School:

County Milwaukee

Property Taxes: \$2,045

Property Tax Year:2010

MLS Number: 1234096

Listing Company: Foremost Realty, LLC

Here's one directly on the newly developing KK River in Lincoln Village





2630 S 7th St

Milwaukee, WI 53215-3408

\$74,900

Status:	Active
Sale Date:	
Property Type:	Single Family
Total Rooms:	6
Bedrooms:	3
Full Bathrooms:	1
Half Bathrooms:	0
Garage Size:	1.5
Garage Type:	Alley Entrance, Parking Space
Lot Size:	Less than 1/4
Subdivision:	

School District: Milwaukee

High School:

County Milwaukee

Property Taxes: \$2,051

Property Tax Year:2010

MLS Number: 1225324

Listing Company: Homeowners Concept

THERE ARE 19 DUPLEXES LEFT IN THE PARK NEIGHBORHOODS

HERE IS A BRAND NEW LISTING AND AN IMPOSSIBLE BARGAIN FOR THOSE WANTING TO FIX UP A PLACE
(SORRY, NO PHOTO)

2244 S 5th Pl

Milwaukee, WI 53207-1122

\$8,500

Status: Active

Sale Date:

Property Type: Two Family

Total Rooms: 4

Unit 1 Beds: 2

Unit 1 Baths: 1.0

Unit 2 Beds: 1

Unit 2 Baths: 1.0

Garage Size: 0.0

Garage Type: None

Lot Size: Less than 1/4

Subdivision:

School District: Milwaukee

High School:

County Milwaukee

Property Taxes: \$1,605

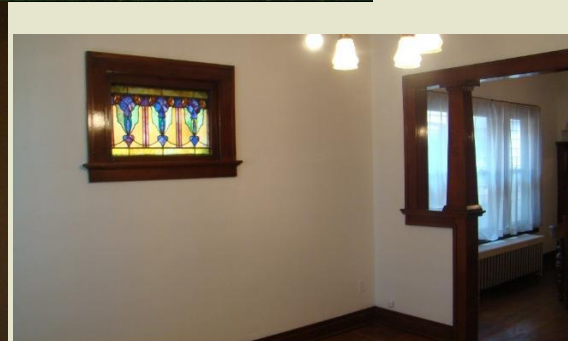
Property Tax Year:2010

MLS Number: 1235688

Listing Company: Realty Executives - Elite

AND HERE IS A DUPLEX THAT IS ON THE NEWLY DEVELOPING KK RIVER





2561 S 11th St 2561a

Milwaukee, WI 53215-3331

\$89,000

Status: Active

Sale Date:

Property Type: Two Family

Total Rooms: 6

Unit 1 Beds: 3

Unit 1 Baths: 1.0

Unit 2 Beds: 3

Unit 2 Baths: 1.0

Garage Size: 2.0

Garage Type: Detached

Lot Size: Less than 1/4

Subdivision:

School District: Milwaukee

High School:

County Milwaukee

Property Taxes: \$2,367

Property Tax Year:2010

MLS Number: 1212573

Listing Company: Re/Max Realty 100